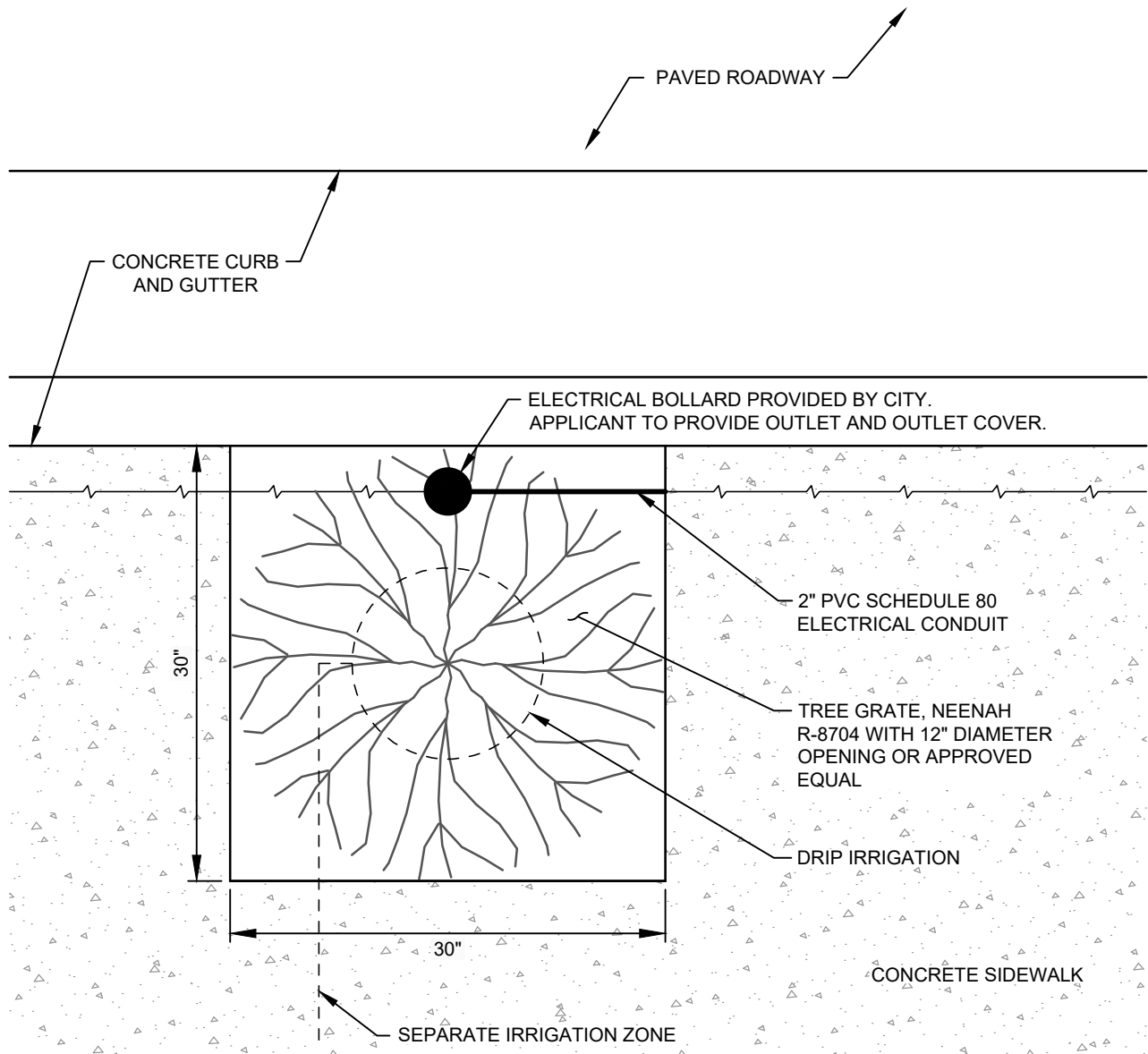


City of Ketchum Revisions to the Idaho Standards for Public Works Construction (ISPWC)

November 2022

IF NO MODIFICATIONS,
USE CURRENT VERSION OF ISPWC

REVISION	APPROVED	DATE	CITY OF KETCHUM STANDARD DRAWING	DRAWING NO.
REV. 1	CITY	10/2019	<h2>COVER</h2>	
REV. 2	CITY	11/2022		

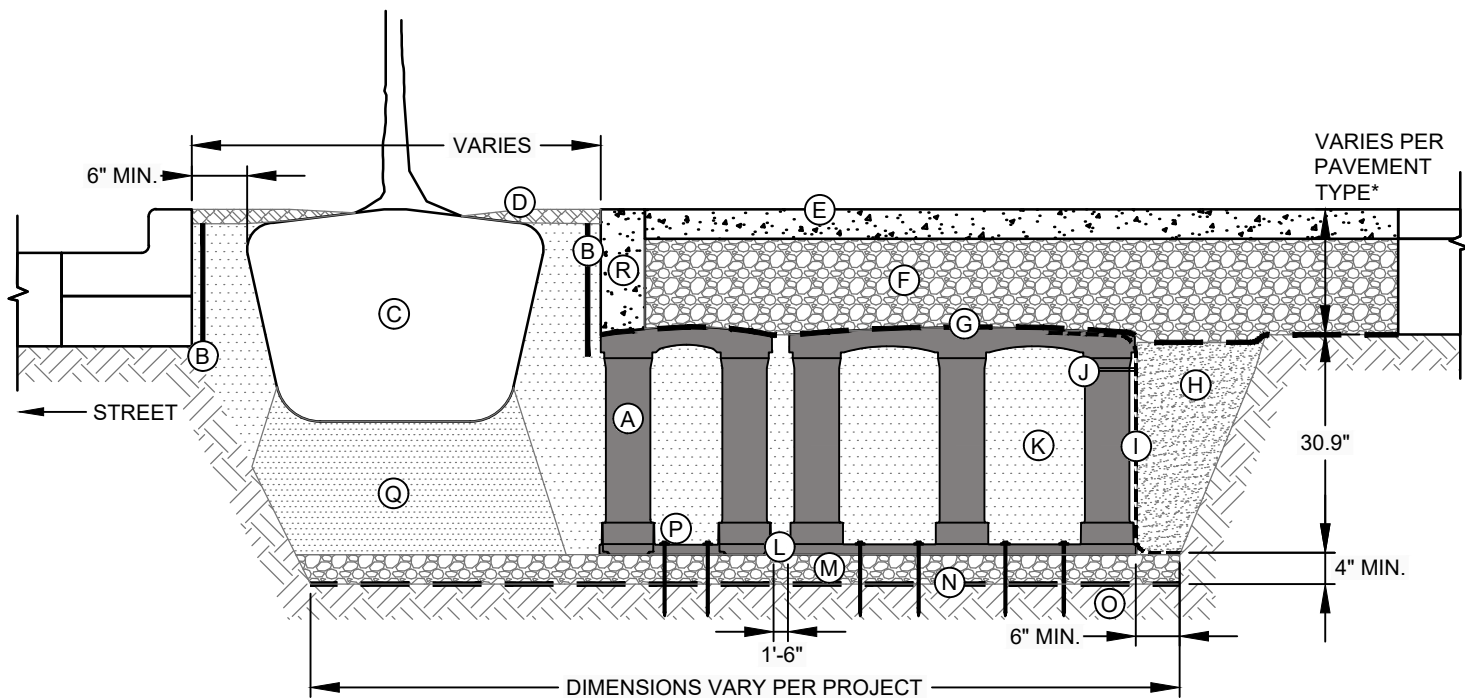


NOTES:

1. TREE TO BE 3" MINIMUM CALIPER AUTUMN BLAZE MAPLE OR APPROVED EQUAL.
2. CITY OF KETCHUM REQUIRES DRIP IRRIGATION TO BE ON A SEPARATE ZONE WITH HUNTER/RAINWISE SMART CLOCK, OR APPROVED EQUAL, FOR REMOTE ACCESS BY CITY. IF AVAILABLE TIE INTO AN EXISTING CITY IRRIGATION LINE.
3. APPLICANT TO CONNECT AND PROVIDE CONDUITS, WIRING, AND SEPARATE CIRCUIT, OR TIE TO A CITY CIRCUIT FOR POWER.
4. NO DIRECT BURIAL WIRE PERMITTED.
5. TREE INSTALLATION TO BE MODULAR SUSPENDED PAVEMENT SYSTEM. SEE TREE WELL SECTION VIEW, DETAIL 2.

PLAN VIEW

REVISION	APPROVED	DATE	CITY OF KETCHUM STANDARD DRAWING	DRAWING NO.
REV. 1	CITY	10/2019		
REV. 2	CITY	11/2022		



MODULAR SUSPENDED PAVEMENT SYSTEM

KEY PLAN:

- A. SILVA CELL SYSTEM (DECK, BASE, AND POSTS) OR APPROVED EQUAL.
- B. DEEPROOT ROOT BARRIER, 12" OR 18", DEPTH DETERMINED BY THICKNESS OF PAVEMENT SECTION, INSTALL DIRECTLY ADJACENT TO CONCRETE EDGE RESTRAINT. PREVENTS ROOTS FROM DISTURBING PAVEMENT.
- C. TREE ROOT PACKAGE, SIZE VARIES
- D. TREE OPENING TREATMENT, PER PROJECT SPECIFICATIONS
- E. SURFACE TREATMENT, PER PROJECT
- F. AGGREGATE BASE COURSE, DEPTH VARIES PER PROJECT
- G. GEOTEXTILE TO KEEP AGGREGATE FROM MIGRATING DOWN THROUGH CELL DECK
- H. BACKFILL, PER PROJECT SPECIFICATIONS
- I. GEOGRID TO PROVIDE FOR VERTICAL SEPARATION BETWEEN PLANTING SOILS AND BACKFILL WHILE ALLOWING ROOT PENETRATION INTO ADJACENT SOILS. 6" (150 mm) TOE (OUTWARD FROM BASE) AND 12" (305 mm) EXCESS (OVER TOP OF DECK).
- J. CABLE TIE, ATTACHING GEOGRID TO SILVA CELL AT BASE OF UPPER POST FLARE
- K. PLANTING SOIL, PER PROJECT SPECIFICATIONS, COMPACTED TO 70-80% PROCTOR
- L. SILVA CELL BASE SLOPE, 10% MAX
- M. 4" (100 mm) MIN AGGREGATE SUB BASE, COMPACTED TO 95% PROCTOR
- N. GEOTEXTILE, TO PROVIDE SEPARATION BETWEEN SUBGRADE AND AGGREGATE BASE
- O. SUBGRADE, COMPACTED TO 95% PROCTOR
- P. PIN, PER SILVA CELL SPECIFICATIONS, TO KEEP CELLS IN PLACE DURING CONSTRUCTION
- Q. PLANTING SOIL BELOW TREE ROOT PACKAGE, COMPACTED TO 85-90% PROCTOR
- R. CONCRETE EDGE RESTRAINT TO STABILIZE EDGE AND PREVENT AGGREGATE MIGRATION INTO TREE OPENING.

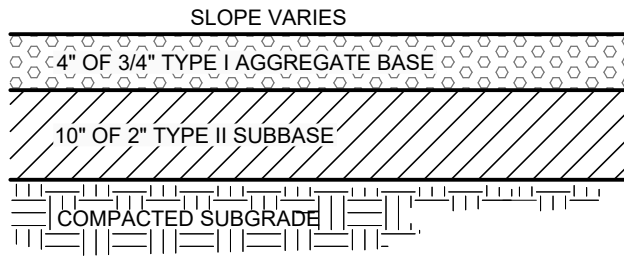
*MINIMUM PAVEMENT PROFILE OPTIONS TO MEET H-20 LOADING	
PAVEMENT	+ AGGREGATE BASE COURSE
4" CONCRETE	+ 4" AGGREGATE
3" PAVER	+ 12" AGGREGATE
4" ASPHALT	+ 12" AGGREGATE
2.6" PAVER	+ 5" CONCRETE

SECTION VIEW

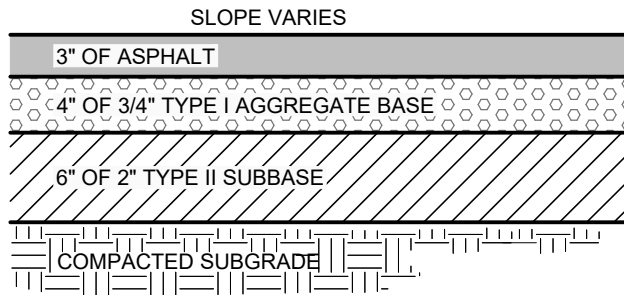
NOTES:

1. EXCAVATION SHALL BE DONE IN ACCORDANCE WITH ALL APPLICABLE HEALTH AND SAFETY REGULATIONS.
2. INSTALLATION TO BE COMPLETED IN ACCORDANCE WITH MANUFACTURER'S SPECIFICATIONS.
3. A PROJECT SPECIFIC DETAIL WILL NEED TO BE PROVIDED TO CITY FOR REVIEW AND APPROVAL.

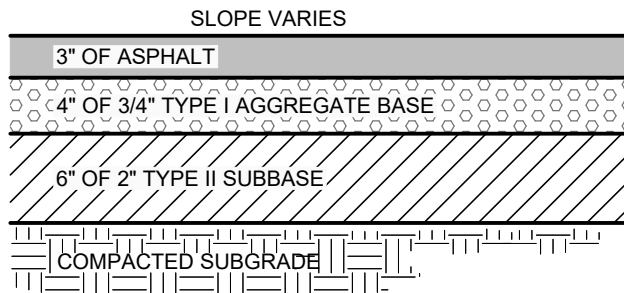
REVISION	APPROVED	DATE	CITY OF KETCHUM STANDARD DRAWING	DRAWING NO.
REV. 1	CITY	10/2019		
			TREE WELL DETAIL	2



TYPICAL GRAVEL SECTION



TYPICAL STREET ASPHALT SECTION

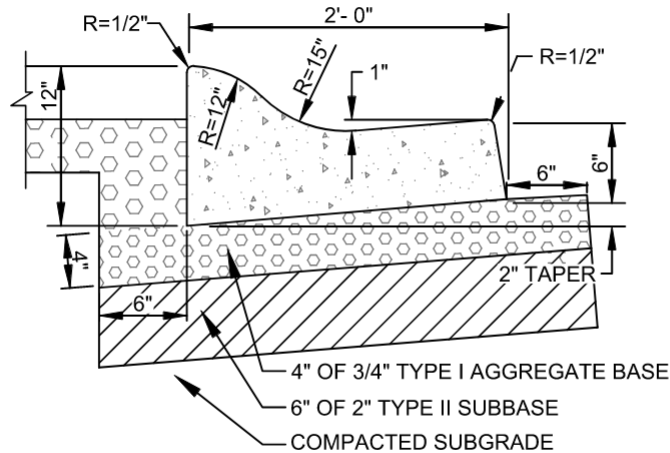


TYPICAL ALLEY ASPHALT SECTION

NOTES:

1. SUBBASE CAN BE 2" TYPE II OR 3/4" TYPE I CRUSHED AGGREGATE BASE COURSE.
2. MATERIALS SHALL CONFORM WITH CURRENT ISPWC STANDARDS, DIVISION 800 AGGREGATES AND ASPHALT.
3. PAVEMENT SECTION MAY BE MODIFIED IF A PROJECT SPECIFIC GEOTECHNICAL REPORT, STAMPED BY A LICENSED ENGINEER, IS PROVIDED.

REVISION	APPROVED	DATE	CITY OF KETCHUM STANDARD DRAWING	DRAWING NO.
REV. 1	CITY	10/2019	TYPICAL ROAD SECTIONS	3

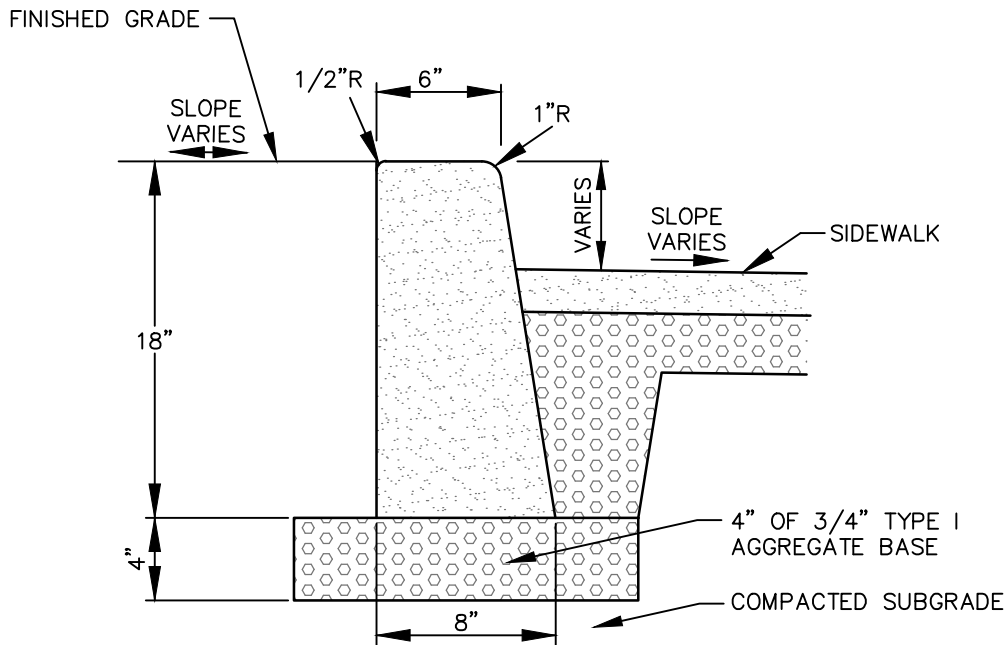


6" CONCRETE ROLLED CURB & GUTTER

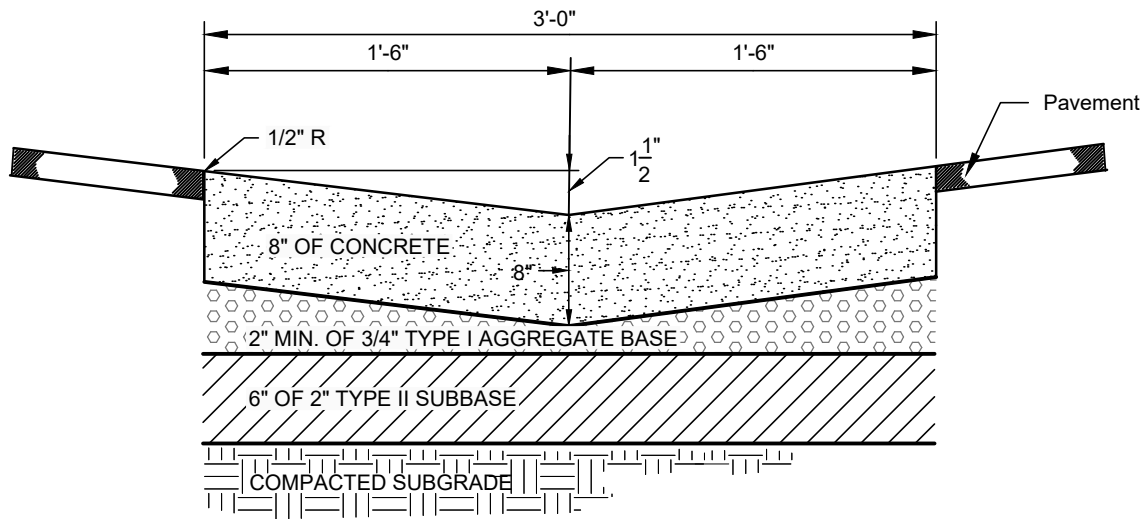
NOTES:

1. 1/2-INCH PREFORMED EXPANSION JOINT MATERIAL (AASHTO M 213) AT TERMINAL POINTS OF RADII.
2. CONTINUOUS PLACEMENT PREFERRED, SCORE INTERVALS TO MATCH SIDEWALK WITH 10-FOOT MAXIMUM SPACING.
3. MATERIALS SHALL CONFORM WITH CURRENT ISPWC STANDARDS, DIVISION 800 AGGREGATES AND ASPHALT.
4. CONCRETE SHALL BE TITAN MIX OR APPROVED EQUAL.
5. 6" ROLLED CURB IS CITY STANDARD.
6. 3" ROLLED CURB NOT PERMITTED AT SIDEWALK OR BIKE PATH LOCATIONS.

REVISION	APPROVED	DATE	CITY OF KETCHUM STANDARD DRAWING	DRAWING NO.
REV. 1	CITY	10/2019	TYPICAL CURB & GUTTER SIDEWALK LOCATIONS	4
REV. 2	CITY	07/2022		
REV. 3	CITY	11/2022		



6" CONCRETE VERTICAL CURB



36" CONCRETE VALLEY GUTTER

NOTES:

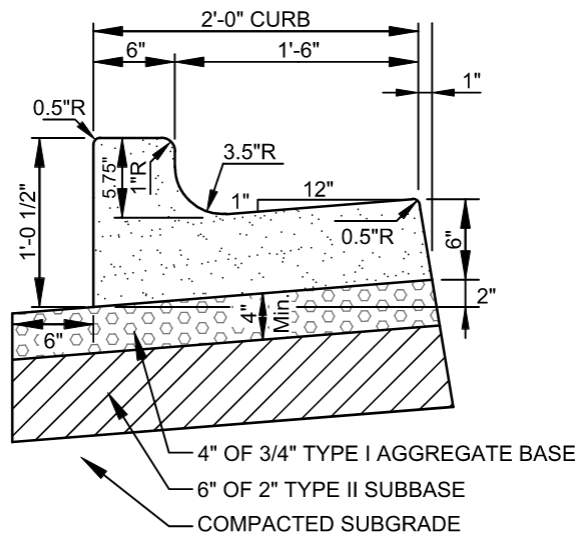
1. 1/2-INCH PREFORMED EXPANSION JOINT MATERIAL (AASHTO M 213) AT TERMINAL POINTS OF RADII.
2. CONTINUOUS PLACEMENT PREFERRED, SCORE INTERVALS TO MATCH SIDEWALK WITH 10-FOOT MAXIMUM SPACING.
3. MATERIALS SHALL CONFORM WITH CURRENT ISPWC STANDARDS, DIVISION 800 AGGREGATES AND ASPHALT.
4. CONCRETE SHALL BE TITAN MIX OR APPROVED EQUAL.

REVISION	APPROVED	DATE
REV. 1	CITY	10/2019
REV. 2	CITY	11/2022

CITY OF KETCHUM STANDARD DRAWING

**TYPICAL CURB & GUTTER
NON-SIDEWALK LOCATIONS**

DRAWING NO. **5**

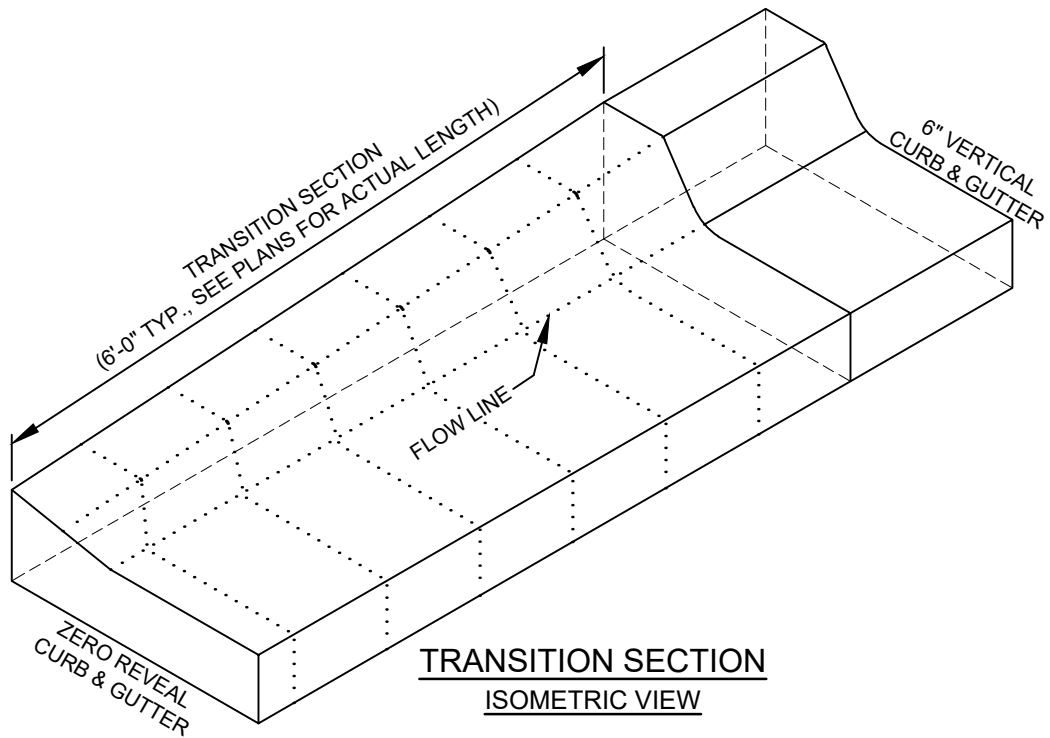


6" CONCRETE VERTICAL CURB & GUTTER

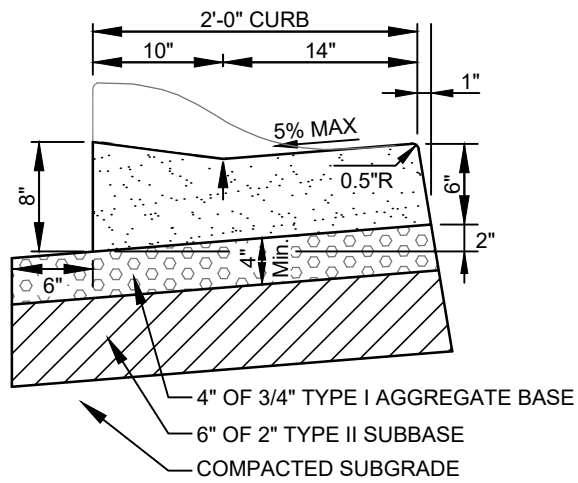
NOTES:

1. 1/2-INCH PREFORMED EXPANSION JOINT MATERIAL (AASHTO M 213) AT TERMINAL POINTS OF RADII.
2. CONTINUOUS PLACEMENT PREFERRED, SCORE INTERVALS TO MATCH SIDEWALK WITH 10-FEET MAXIMUM SPACING.
3. MATERIALS SHALL CONFORM WITH CURRENT ISPWC STANDARDS, DIVISION 800 AGGREGATES AND ASPHALT.
4. CONCRETE SHALL BE TITAN MIX OR APPROVED EQUAL.

REVISION	APPROVED	DATE	CITY OF KETCHUM STANDARD DRAWING	DRAWING NO.
REV. 1	CITY	10/2019		
REV. 2	CITY	07/2022		
REV. 3	CITY	11/2022		



**TRANSITION SECTION
ISOMETRIC VIEW**



ZERO REVEAL CURB & GUTTER

NOTES:

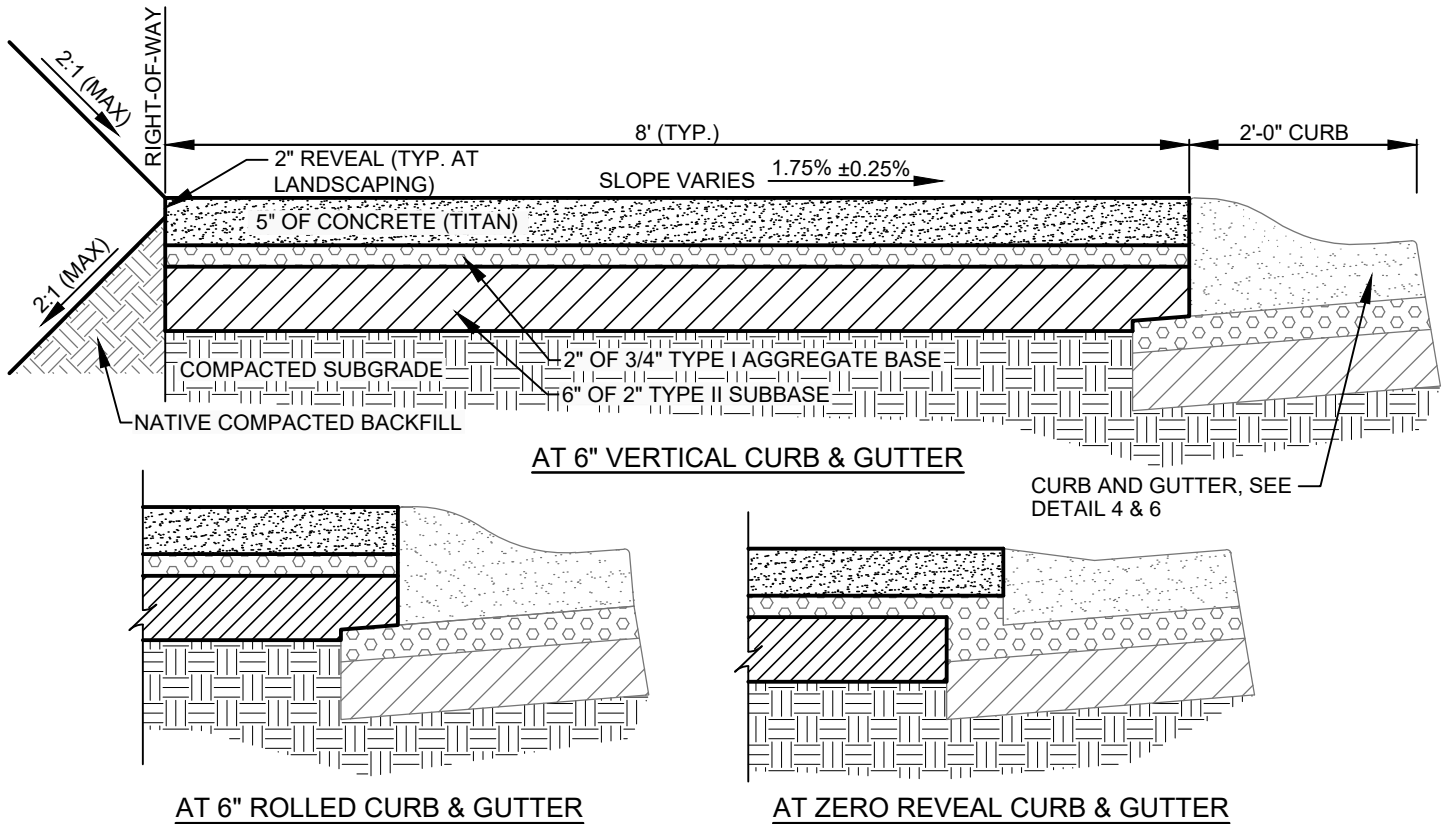
1. 1/2-INCH PREFORMED EXPANSION JOINT MATERIAL (AASHTO M 213) AT TERMINAL POINTS OF RADII.
2. CONTINUOUS PLACEMENT PREFERRED, SCORE INTERVALS TO MATCH SIDEWALK WITH 10-FOOT MAXIMUM SPACING.
3. MATERIALS SHALL CONFORM WITH CURRENT ISPWC STANDARDS, DIVISION 800 AGGREGATES AND ASPHALT.
4. CONCRETE SHALL BE TITAN MIX OR APPROVED EQUAL.

REVISION	APPROVED	DATE
REV. 1	CITY	10/2019
REV. 2	CITY	11/2022

CITY OF KETCHUM STANDARD DRAWING

**TYPICAL CURB
TRANSITION DETAIL**

DRAWING NO. **6**

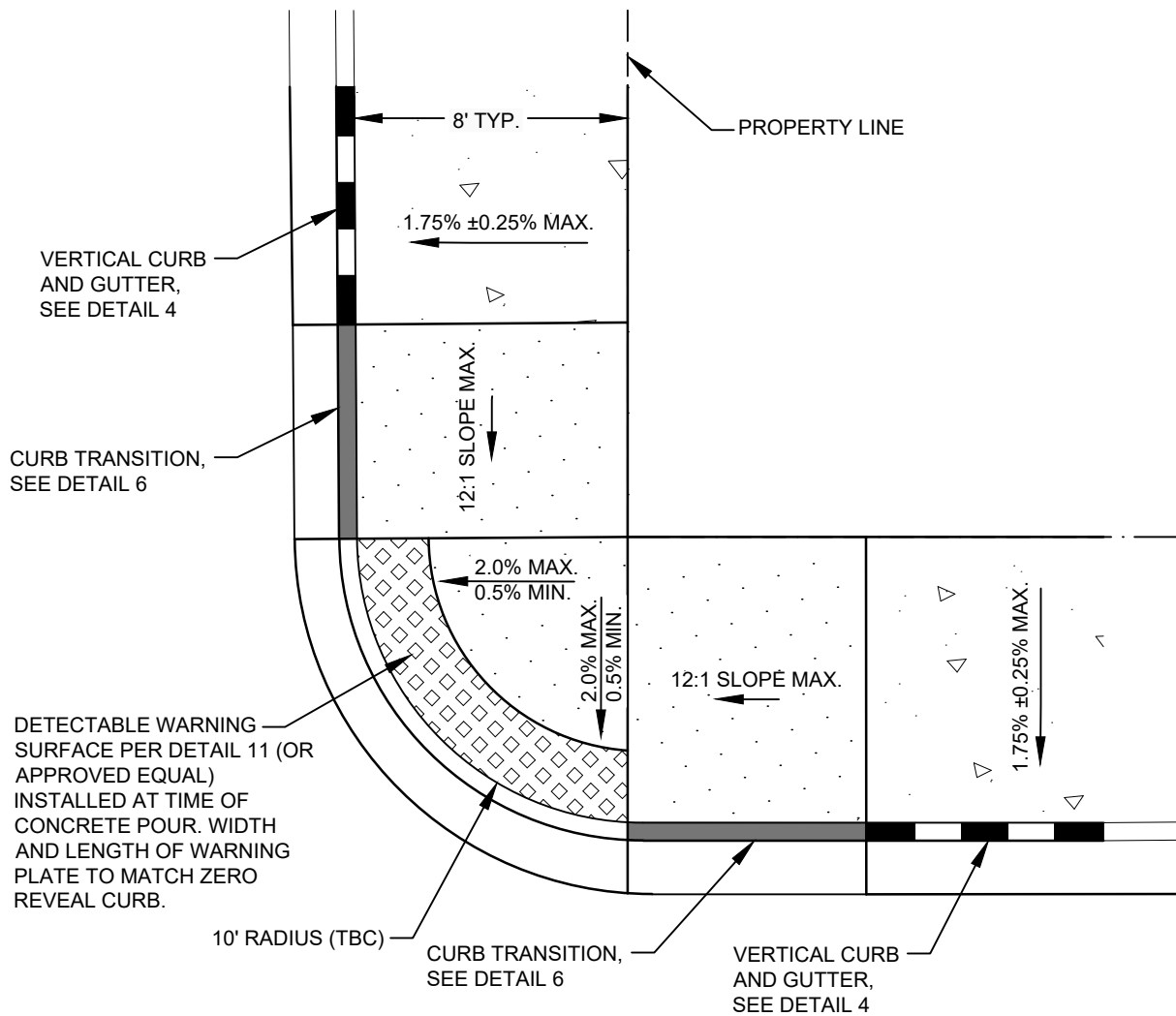


CONCRETE SIDEWALK WITH CURB AND GUTTER

NOTES:

1. INSTALL SCORE JOINTS AT INTERVALS TO MATCH WIDTH OF WALK NOT TO EXCEED 5 FEET SPACING IN BOTH THE LONGITUDINAL AND TRANSVERSE DIRECTION FOR SIDEWALK GREATER THAN 5 FEET IN WIDTH. INSTALL EXPANSION JOINTS EVERY 10 FEET IN LONGITUDINAL DIRECTION.
2. 1/2" TRANSVERSE PREFORMED BITUMINOUS JOINTS AT THE TERMINUS POINTS FOR CURVE AND WHERE SIDEWALK IS PLACED BETWEEN TWO PERMANENT FOUNDATIONS OR ADJACENT TO THE STRUCTURE, PLACE 1/2" EXPANSION JOINT MATERIAL ALONG THE BACK OF WALK THE FULL LENGTH.
3. SIDEWALK CONSTRUCTION JOINTS SHALL BE CONSTRUCTED APPROXIMATELY 1/8" WIDE, 3/4" IN DEPTH AND FINISHED AND EDGED SMOOTH. A PREFORMED EXPANSION JOINT FILLER SHALL BE PLACED EVERY 40' FOR NEW SIDEWALK CONSTRUCTION.
4. WHEN TRANSITIONING NEW SIDEWALK TO EXISTING, A MINIMUM 5' TRANSITIONAL PANEL SHALL BE SEPARATED AND ISOLATED WITH EXPANSION MATERIAL.
5. SIDEWALK ALIGNMENT TRANSITIONS SHALL HAVE A MINIMUM RADIUS OF 30' TO THE FACE OF CURB.
6. MATERIALS SHALL CONFORM WITH CURRENT ISPWC STANDARDS, DIVISION 800 AGGREGATES AND ASPHALT.
7. CONCRETE SHALL BE TITAN MIX. OR APPROVED EQUAL.

REVISION	APPROVED	DATE	CITY OF KETCHUM STANDARD DRAWING	DRAWING NO.
REV. 1	CITY	10/2019	<h3 style="margin: 0;">CONCRETE SIDEWALK WITH CURB AND GUTTER</h3>	<h1 style="font-size: 2em; margin: 0;">7</h1>
REV. 2	CITY	11/2022		



NOTES:

1. RAMP CONFIGURATION SHOWN HEREON IS PREFERRED. CITY MAY APPROVE ALTERNATE CONFIGURATIONS IF SITE RESTRICTIONS EXIST.
2. ALTERNATE RAMPS MUST CONFORM WITH CURRENT ISPMC PEDESTRIAN RAMP STANDARD DRAWING 712.
3. CONCRETE SHALL BE TITAN MIX. OR APPROVED EQUAL.

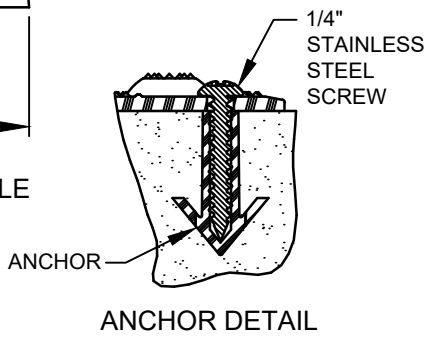
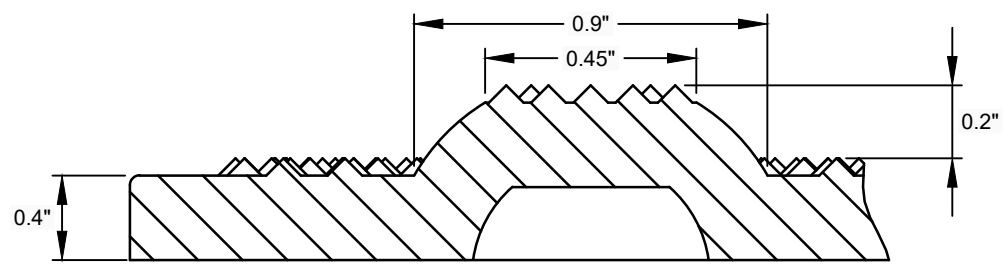
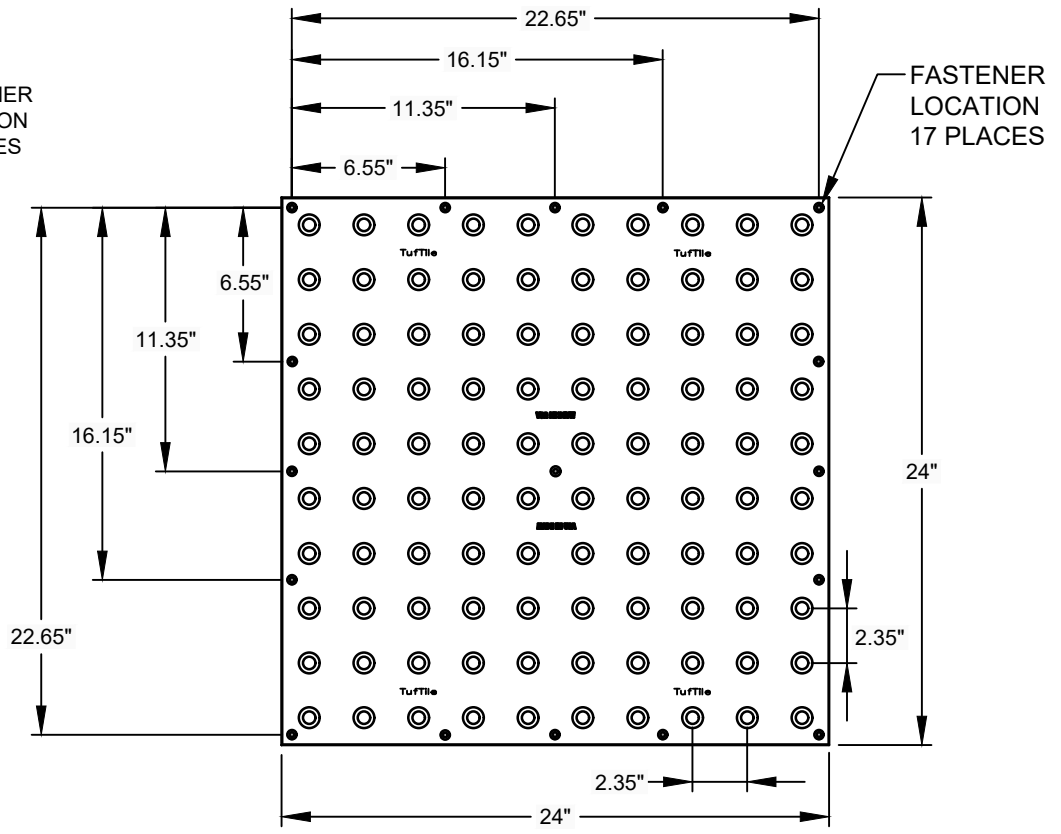
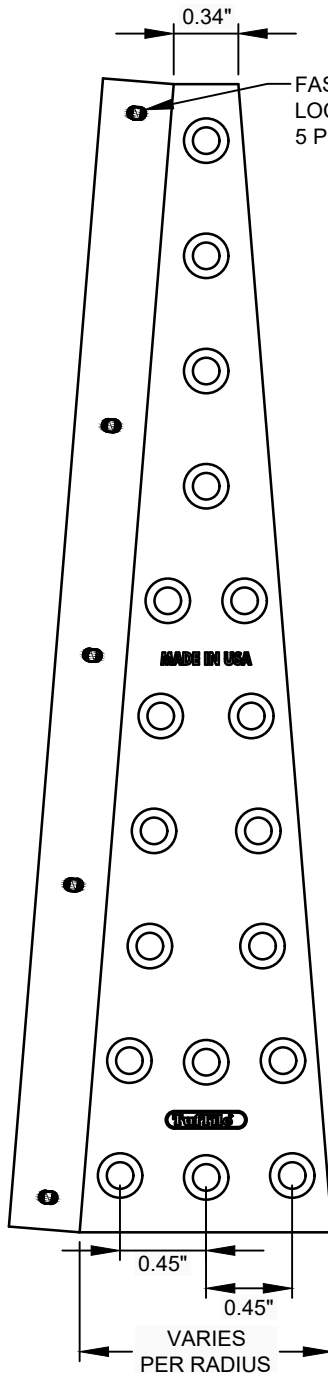
REVISION	APPROVED	DATE
REV. 1	CITY	10/2019
REV. 2	CITY	11/2022

CITY OF KETCHUM STANDARD DRAWING

DRAWING NO.

ADA RAMP DETAIL

8



- NOTES:**
1. DETECTABLE WARNING TILES SHALL BE TUFTILE (CAST IRON & WET SET) OR APPROVED EQUAL.
 2. REFER TO DETAIL 8.
 3. COLOR TO BE PATINA (NO FINISH).

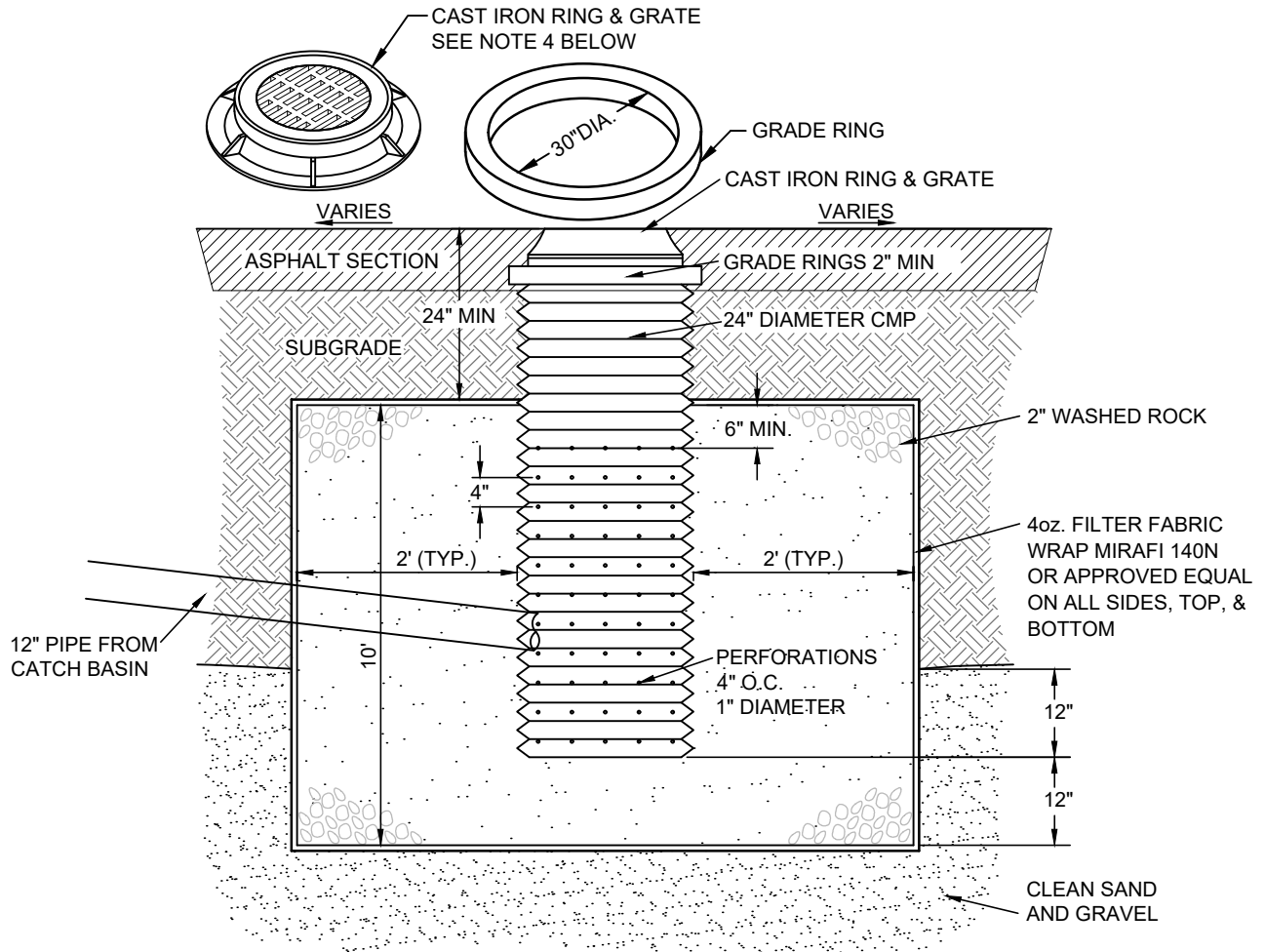
REVISION	APPROVED	DATE
REV. 1	CITY	10/2019

CITY OF KETCHUM STANDARD DRAWING

DETECTABLE WARNING PLATE

DRAWING NO.

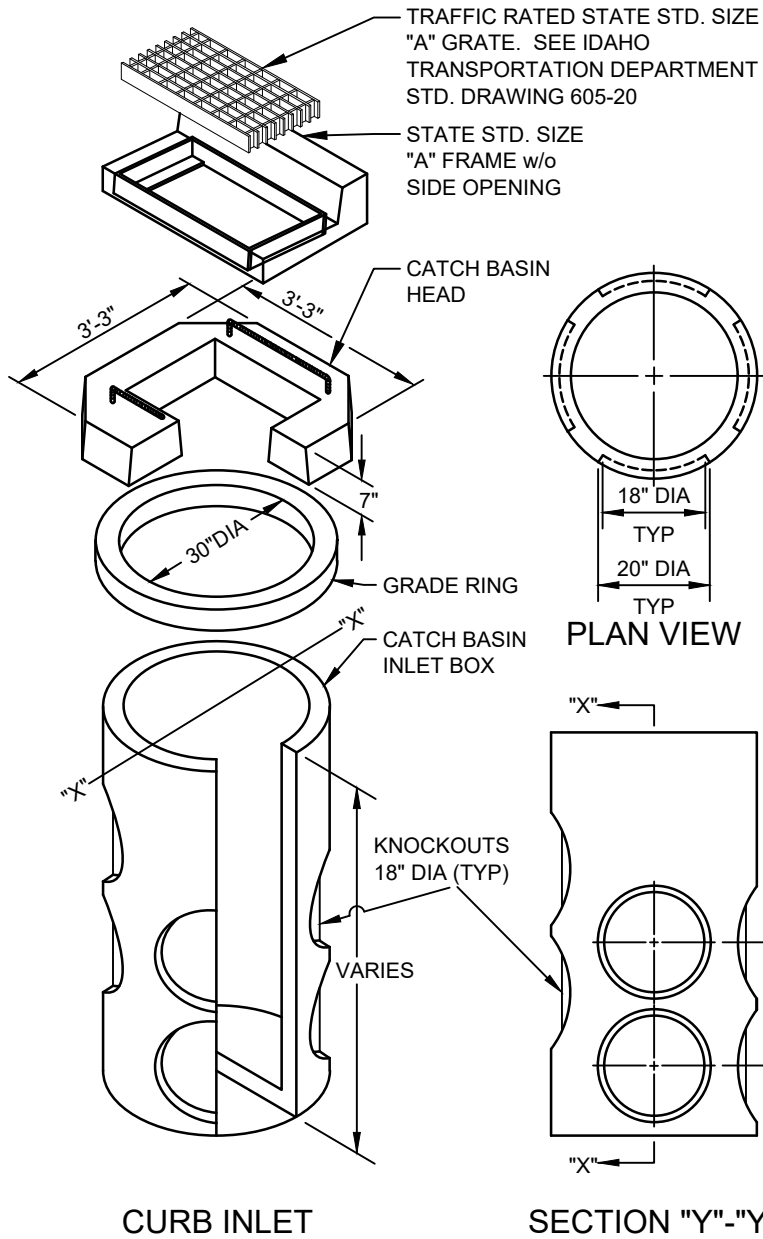
9



NOTE:

1. THE BED SHALL BE EXCAVATED A MINIMUM OF 24" INTO CLEAN SAND AND GRAVEL.
2. MAXIMUM DEPTH SHALL NOT EXCEED 12 FEET.
3. IF CLEAN SAND AND GRAVEL IS NOT ENCOUNTERED WITHIN 12 FEET, THE CONTRACTOR SHALL CONTACT THE DESIGN ENGINEER.
4. GRATE OR SOLID LID AS APPROVED BY CITY OF KETCHUM.
5. STORMWATER PRETREATMENT REQUIRED BEFORE DISCHARGING TO A DRYWELL.
6. 10' MINIMUM SEPERATION DISTANCE BETWEEN DRYWELL AND MUNICIPAL WATER LINES.

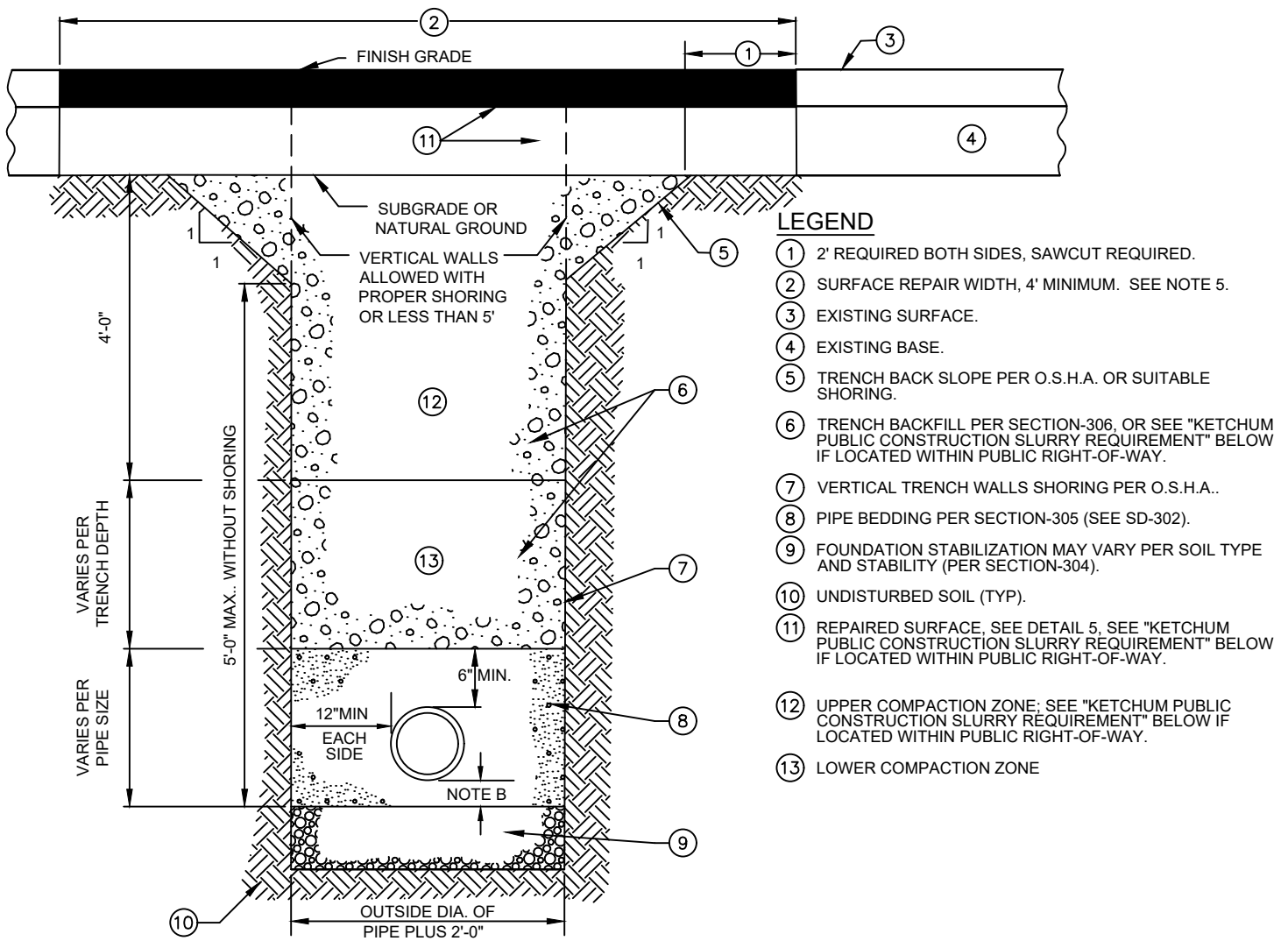
REVISION	APPROVED	DATE	CITY OF KETCHUM STANDARD DRAWING	DRAWING NO.
REV. 1	CITY	10/2019		



- NOTES:**
1. PLACE A MINIMUM OF 4" OF COMPACTED BEDDING ON PREPARED SUBGRADE AS SPECIFIED IN ISPWC SECTION 305 - PIPE BEDDING. EXTEND BEDDING EITHER TO THE LIMITS OF THE EXCAVATION OR AT LEAST 12" OUTSIDE THE LIMITS OF THE BASE SECTION.
 2. FILL THE BALANCE OF THE EXCAVATED AREA WITH SELECT MATERIAL COMPACTED LEVEL TO THE TOP OF THE BEDDING.
 3. PROVIDE A SMOOTH AND LEVEL BEARING SURFACE ON THE BEDDING SURFACE.

1. ISPWC INLET CATCH BASIN TYPE IV (SD-604A) PREFERRED CATCH BASIN TYPE.

REVISION	APPROVED	DATE	CITY OF KETCHUM STANDARD DRAWING	DRAWING NO.
REV. 1	CITY	10/2019		
REV. 2	CITY	11/2022		



LEGEND

- ① 2' REQUIRED BOTH SIDES, SAWCUT REQUIRED.
- ② SURFACE REPAIR WIDTH, 4' MINIMUM. SEE NOTE 5.
- ③ EXISTING SURFACE.
- ④ EXISTING BASE.
- ⑤ TRENCH BACK SLOPE PER O.S.H.A. OR SUITABLE SHORING.
- ⑥ TRENCH BACKFILL PER SECTION-306, OR SEE "KETCHUM PUBLIC CONSTRUCTION SLURRY REQUIREMENT" BELOW IF LOCATED WITHIN PUBLIC RIGHT-OF-WAY.
- ⑦ VERTICAL TRENCH WALLS SHORING PER O.S.H.A..
- ⑧ PIPE BEDDING PER SECTION-305 (SEE SD-302).
- ⑨ FOUNDATION STABILIZATION MAY VARY PER SOIL TYPE AND STABILITY (PER SECTION-304).
- ⑩ UNDISTURBED SOIL (TYP).
- ⑪ REPAIRED SURFACE, SEE DETAIL 5. SEE "KETCHUM PUBLIC CONSTRUCTION SLURRY REQUIREMENT" BELOW IF LOCATED WITHIN PUBLIC RIGHT-OF-WAY.
- ⑫ UPPER COMPACTION ZONE; SEE "KETCHUM PUBLIC CONSTRUCTION SLURRY REQUIREMENT" BELOW IF LOCATED WITHIN PUBLIC RIGHT-OF-WAY.
- ⑬ LOWER COMPACTION ZONE

KETCHUM PUBLIC CONSTRUCTION SLURRY REQUIREMENT

IN AREAS WHERE IT IS NECESSARY TO CUT THE ASPHALT PAVEMENT AND DIG A TRENCH FOR BURIAL OF CONDUIT CABLE OR OTHER CITY UTILITY, THE TRENCH SHALL BE BACKFILLED WITH A LEAN CONCRETE MIX TO THE BOTTOM OF FINISH SURFACE MATERIAL WITH THE FOLLOWING PROPORTIONS OF MATERIALS:

COARSE AGGREGATE (3/8" MINUS)	: 2,600 LBS
SAND	: 800 LBS
PORTLAND CEMENT	: 94 LBS
WATER	: 11 GAL (MAX.)

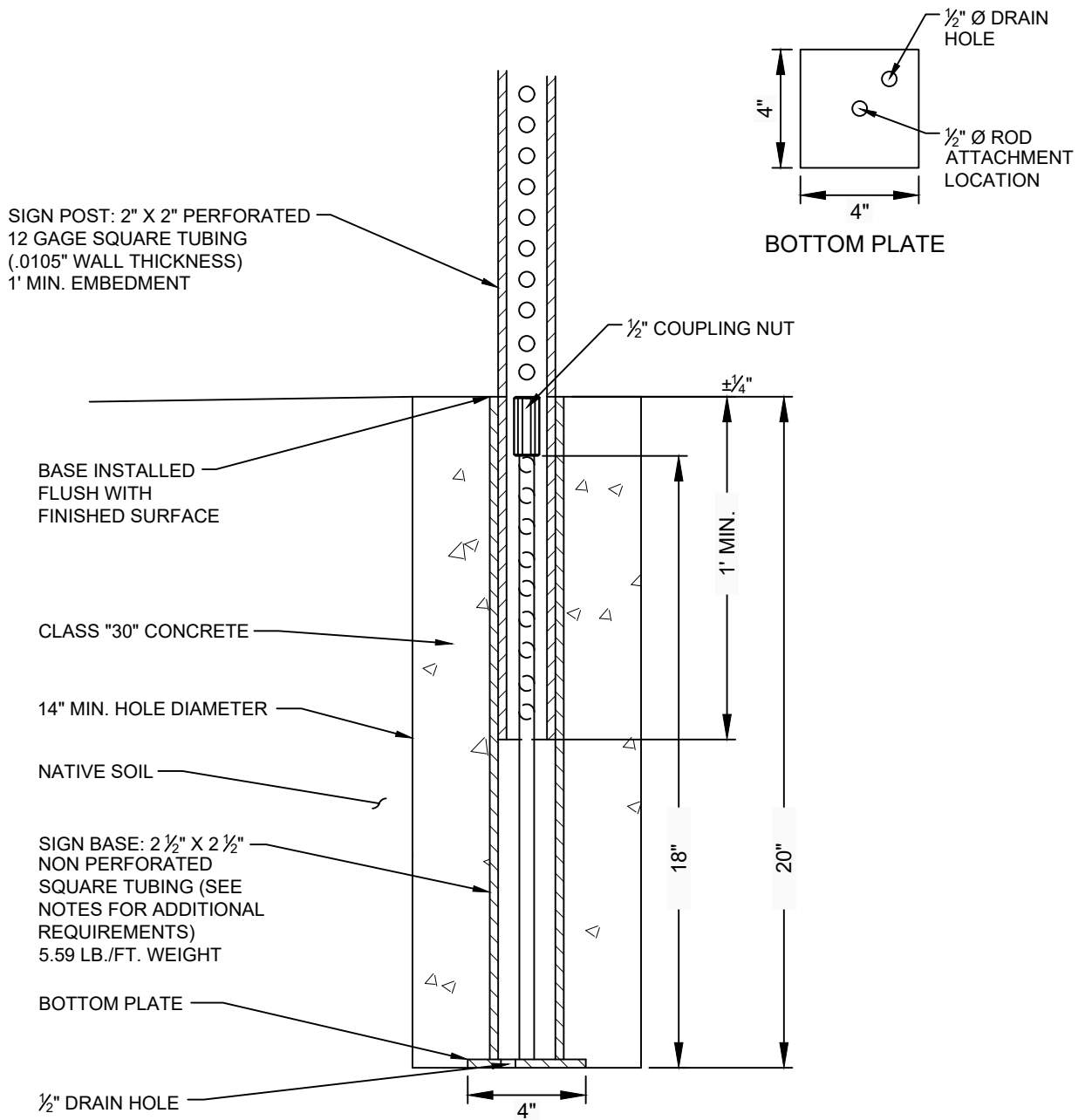
WATER CONTENT IS MAXIMUM AND MAY BE REDUCED DOWNWARD. CARE SHALL BE TAKEN TO ASSURE THAT EXCESS WATER IS NOT PRESENT IN THE MIXING DRUM PRIOR TO CHARGING THE MIXER WITH MATERIALS. THOROUGH MIXING WILL BE REQUIRED PRIOR TO DISCHARGE.

NO COMPACTION, VIBRATION, OR FINISHING IS REQUIRED. THE LEAN CONCRETE MIX SHALL BE STRUCK OFF AT OR BELOW THE ELEVATION OF THE PLANTMIX SURFACING WITH A SQUARE-NOSE SHOVEL OR SIMILAR HAND TOOL. THE BACKFILL MIX SHALL BE ALLOWED TO SET FOR A MINIMUM OF 2 HOURS BEFORE THE PERMANENT PLANTMIX SURFACING IS PLACED TO COMPLETE THE TRENCH REPAIR. TEMPORARY PLACEMENT OF ASPHALT COLD MIX SURFACING MAY BE NECESSARY TO ACCOMMODATE TRAFFIC WITHIN THE FIRST 2 HOURS OF BACKFILL PLACEMENT PRIOR TO COMPLETING THE PERMANENT REPAIR.

NOTES:

1. TRENCH EXCAVATION PER SECTION-301.
2. PIPE BEDDING PER SECTION-305.
3. BACKFILL AND COMPACTION PER SECTION-306.
4. SURFACE REPAIR AND BASE PER DETAIL 3.
5. ASPHALT PAVEMENT FOR SURFACE REPAIR SHALL BE IN ACCORDANCE WITH PLANS AND ISPWC SECTIONS 805, 810, AND 811 FOR CLASS II PAVEMENT. ASPHALT AGGREGATE SHALL BE 1/2" (13MM) NOMINAL SIZE CONFORMING TO TABLE 803B IN ISPWC SECTION 803. ASPHALT BINDER SHALL BE PG 58-28 CONFORMING TO TABLE A-1 IN ISPWC SECTION 805.
6. IF TRENCH IMPACTS CROWN OF ROADWAY, CROWN MUST BE MAINTAINED AND POSITIVE DRAINAGE PROVIDED.

REVISION	APPROVED	DATE	CITY OF KETCHUM STANDARD DRAWING	DRAWING NO.
REV. 1	CITY	10/2019	TYPICAL TRENCH	12



NOTES:

1. BASES SHALL BE INSTALLED TO BE FLUSH WITH SURFACE.
2. ALL INSTALLATIONS SHALL HAVE 14" Ø MINIMUM FOUNDATION OR GROUTED INTO SOLID ROCK.
3. ALL STREET SIGNS SHALL BE IN ACCORDANCE WITH THE MOST CURRENT EDITION OF THE MUTCD.
4. SIGN PLACEMENT SHALL BE APPROVED BY THE CITY OF KETCHUM.
5. CITY TO PROVIDE BASES.

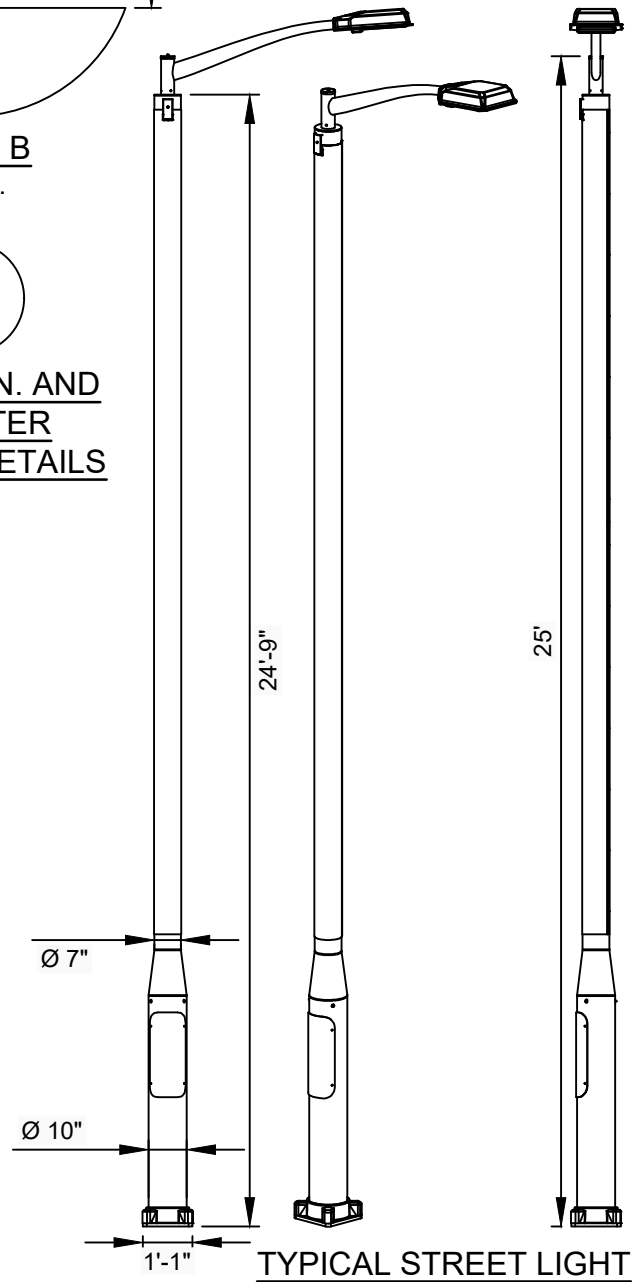
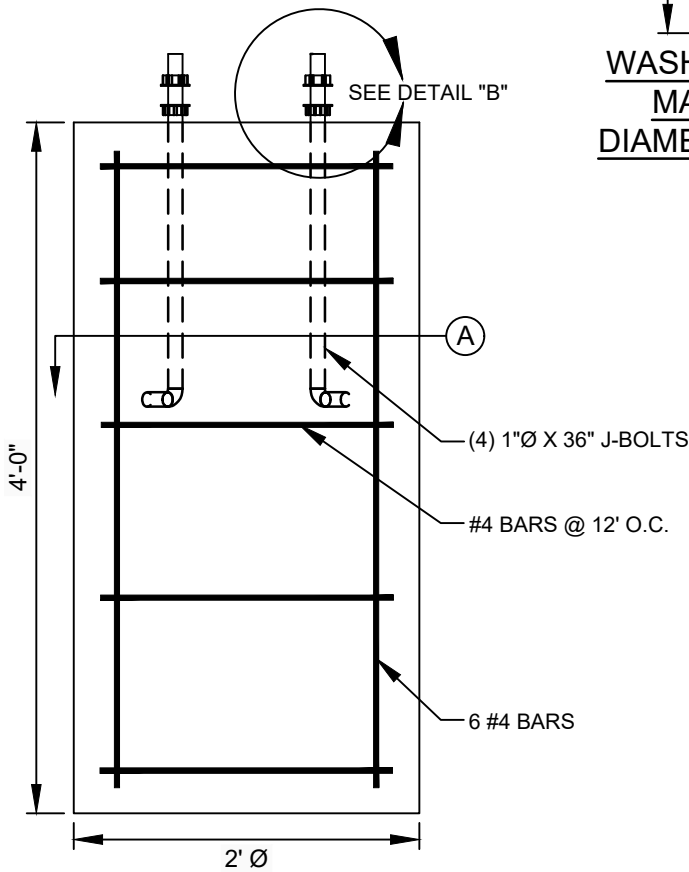
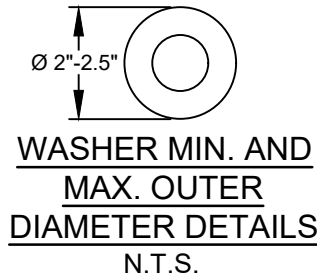
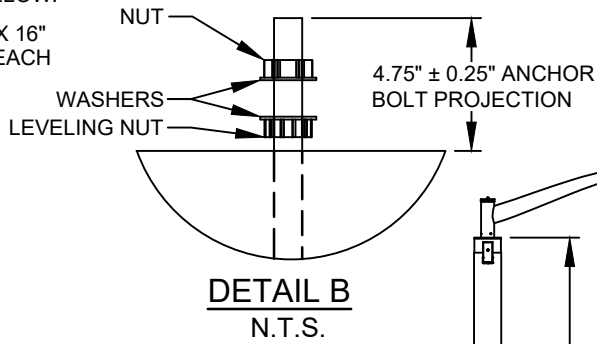
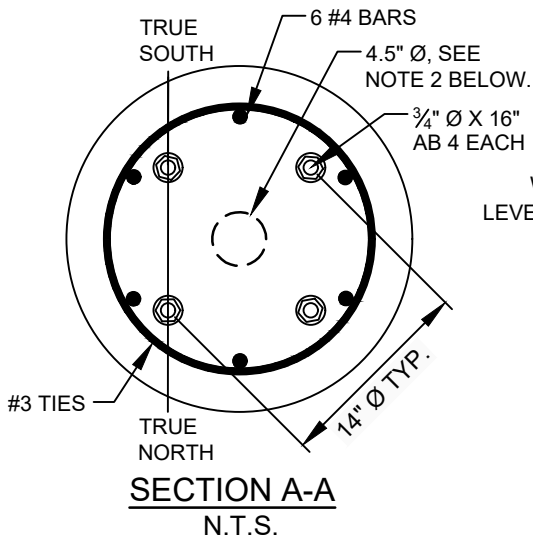
SIGN BASE MATERIAL & DIMENSION REQUIREMENTS	
2 1/2" OUTSIDE TUBE STEEL (20" LENGTH)	
2 1/8" INSIDE TUBE STEEL	
3/16" THICK	
INTERNAL ROD MATERIAL & DIMENSION REQUIREMENTS	
1/2" COLD ROLLED ROD (18" LENGTH)	
1/2" COUPLING NUTS	
BOTTOM PLATE MATERIAL & DIMENSION REQUIREMENTS	
4" X 4" X 1/4" STEEL STRAP	

REVISION	APPROVED	DATE
REV. 1	CITY	10/2019

CITY OF KETCHUM STANDARD DRAWING

TYPICAL SIGN BASE

DRAWING NO. **13**



NOTES:

1. STREET LIGHT IS MH COMPANIES HARD WIRED TO GRID OR APPROVED EQUAL.
2. ANY CONDUITS AND/OR GROUNDING WIRES MUST BE HARDWIRED AND CONTAINED WITHIN A 4.5" Ø CIRCLE CENTERED ON THE FOUNDATION. GROUNDING ELECTRODE WIRE AND AC SUPPLY WIRE (IF REQUIRED) ARE 5' MIN. ABOVE THE BASE.
3. ANCHOR BOLT ORIENTATION TO TRUE NORTH/SOUTH IS ONLY RELEVANT FOR OFF-GRID SOLAR POLES. DISREGARD FOR GRID-TIED POLES.
4. GROUNDING WIRE MUST BE 60" FROM BASE SO IT CAN REACH THE GROUNDING LUG INSIDE THE POLE.
5. STREET LIGHT SHALL BE 25' IN HEIGHT OR AS APPROVED BY CITY OF KETCHUM.

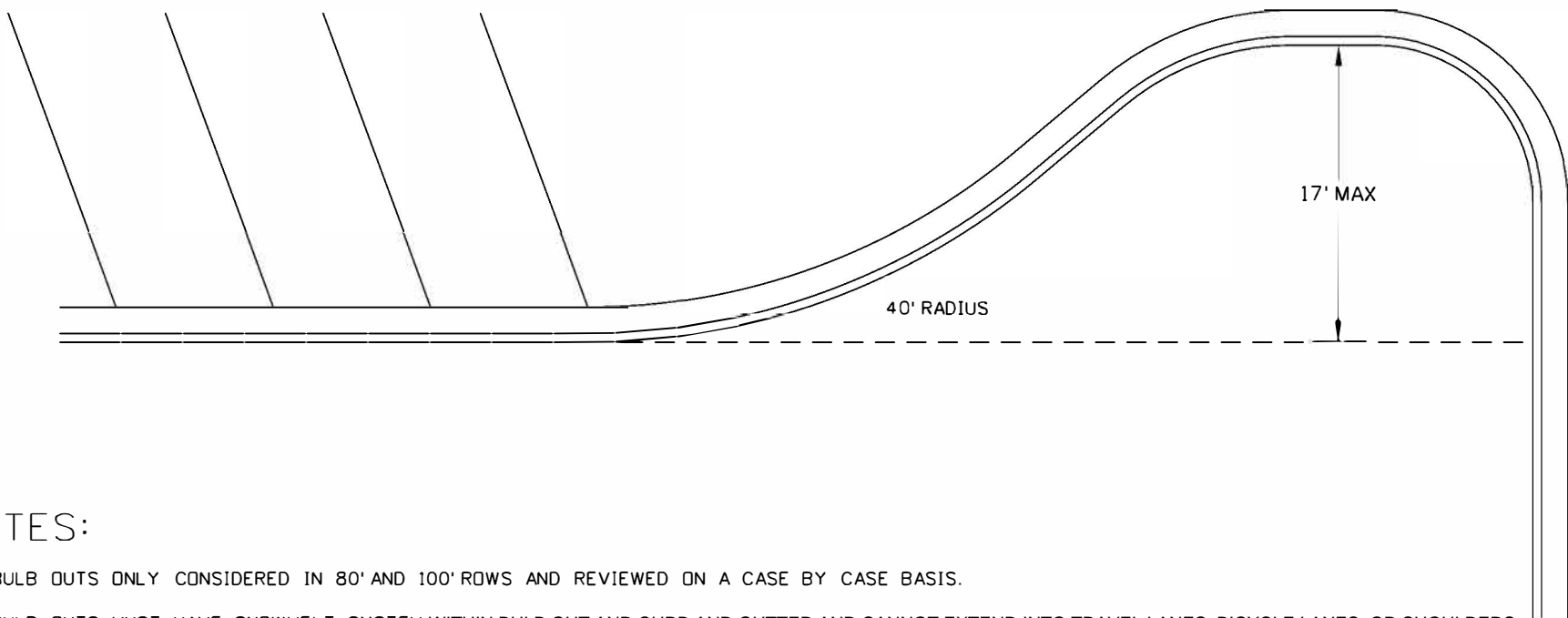
REVISION	APPROVED	DATE
REV. 1	CITY	10/2019

CITY OF KETCHUM STANDARD DRAWING

DRAWING NO.

STREET LIGHT

14



NOTES:

- ① BULB OUTS ONLY CONSIDERED IN 80' AND 100' ROWS AND REVIEWED ON A CASE BY CASE BASIS.
- ② BULB OUTS MUST HAVE SNOWMELT SYSTEM WITHIN BULB OUT AND CURB AND GUTTER AND CANNOT EXTEND INTO TRAVEL LANES, BICYCLE LANES, OR SHOULDERS.
- ③ BULB OUTS NOT PERMITTED ON CORNERS WITH FREQUENT RIGHT TURNS BY TRUCKS AND BUSES.
- ④ ITEMS MAY NOT BE PLACED IN BULB OUT THAT INHIBIT DRIVERS FIELD OF VISION.
- ⑤ PARKING PER CITY ROW STANDARDS.
- ⑥ MUST MEET ADA STANDARDS.

REVISIONS			
NO.	DATE	BY	DESCRIPTION
1	09/01/2019	SN	STANDARD DRAWING
2	11/23/2022	CITY	STANDARD DRAWING

CITY OF KETCHUM STANDARD DRAWING
BULB OUT

STANDARD DRAWING
NO. 15

CITY TESTING REQUIREMENTS PER CODE SECTION 12.04.040

SUBGRADE TEST SPECIFICATION	1 PER 1000 SQ YD
CONCRETE TESTING SPECIFICATION	1 PER PROJECT AND 1 ADDITIONAL TEST FOR EACH 25 YARDS
SUBBASE TEST SPECIFICATION	1 PER 1000 SQ YD
BASE TEST SPECIFICATION	1 PER 1000 SQ YD
ASPHALT TEST SPECIFICATION (ISPCW)	1 PER 100 LF FT

CITY GRADATION REQUIREMENTS PER CODE SECTION 12.04.040

BASE GRADATION SPECIFICATION	1 PER 500 TON
CONCRETE MIX DESIGN (TITAN)	PER PROJECT
ASPHALT GRADATIONS SPECIFICATIONS	MIN 1 PER PROJECT

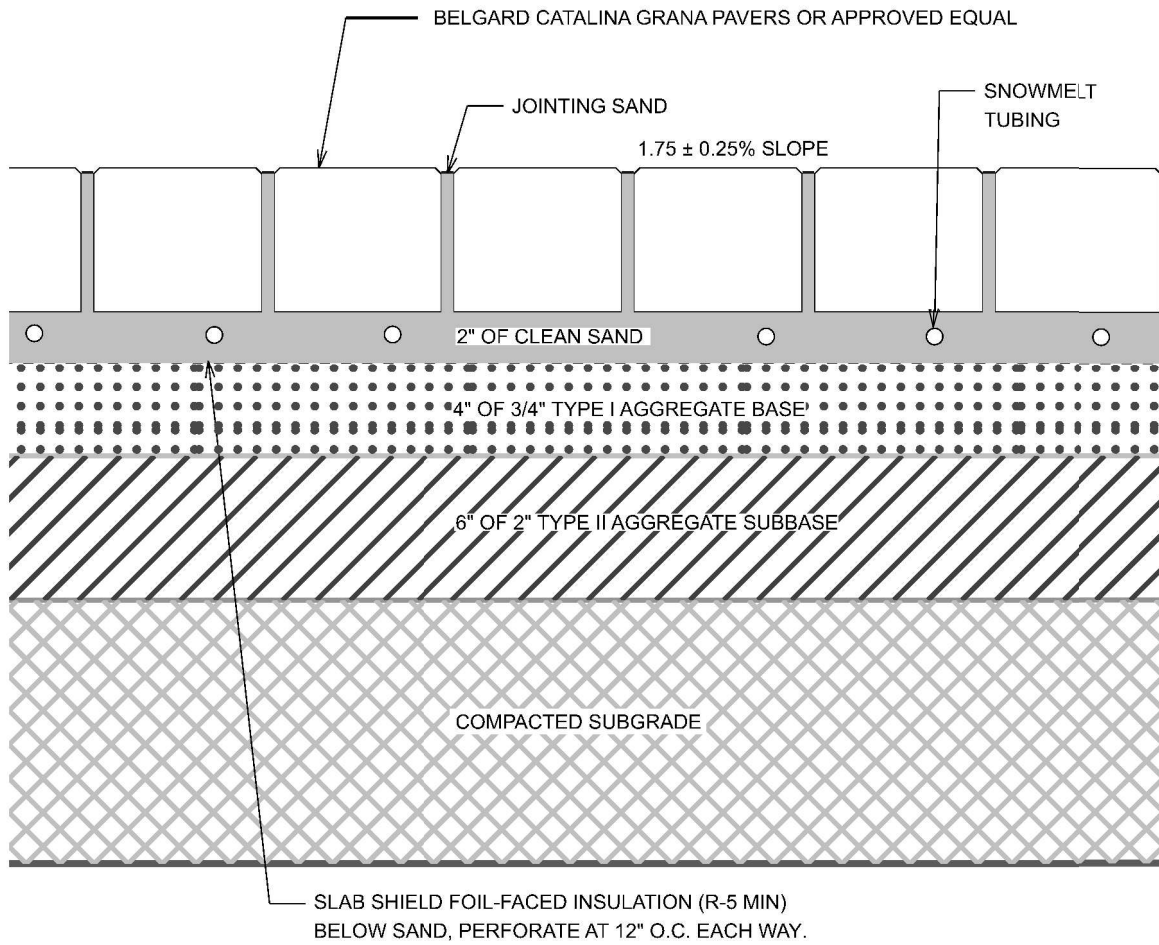
CITY WALL REQUESTS PER CODE SECTION 12.04.040

WALL CONSTRUCTION OBSERVATION REPORTS	1 PER PROJECT
---------------------------------------	---------------

NOTES: _____

1. THESE ARE MINIMUM TESTING REQUIRMENTS.
2. REQUIREMENTS MAY BE WAIVED AT THE CITY ENGINEER DESCRESSION.

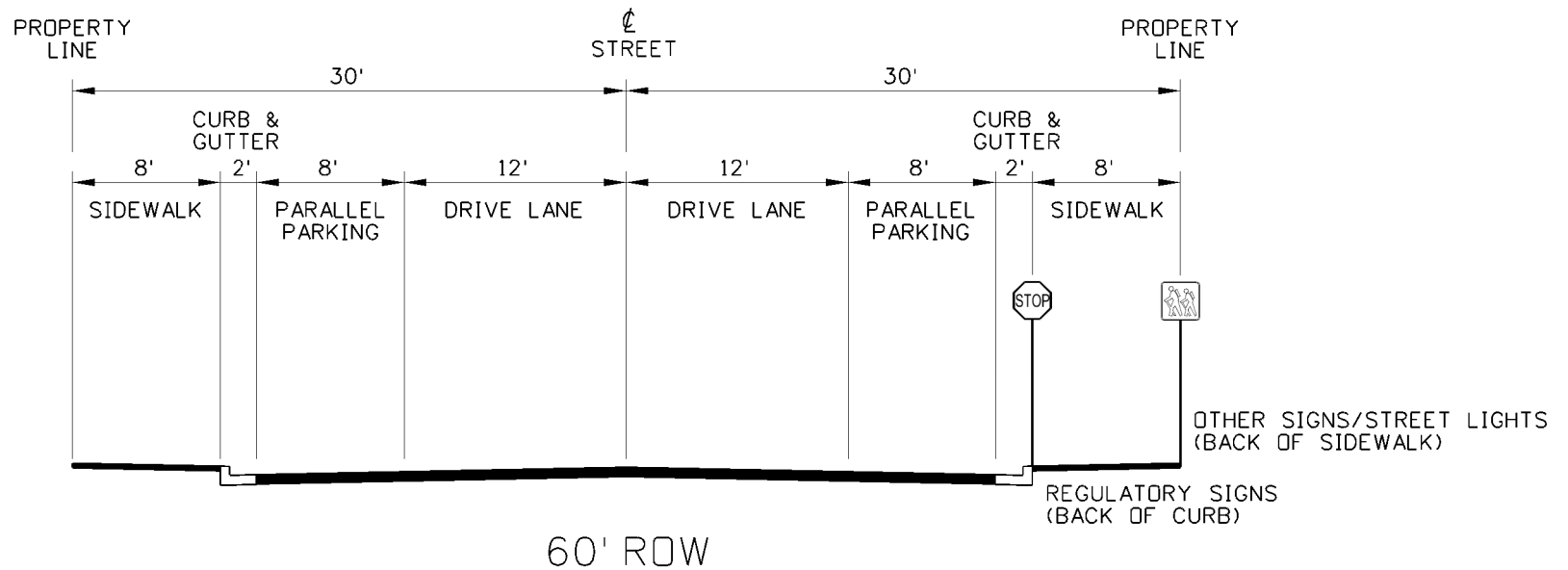
REVISION	APPROVED	DATE	CITY OF KETCHUM STANDARD DRAWING	DRAWING NO.
			ROW TESTING REQUIREMENTS	16



NOTES:

1. POLYMERIC SAND CAN BE USED AT EDGES TO PREVENT WEED, ANT INTERFERENCE.
2. MATERIALS SHALL CONFORM WITH CURRENT ISPWC AND CITY OF KETCHUM STANDARDS.
3. SNOWMELT TUBING RADII, FREQUENCY DEPENDS ON SNOW REMOVAL UPKEEP.
4. SNOWMELT REQUIRED FOR PROJECTS IN THE COMMUNITY CORE AND TOURIST ZONINGS.
5. PAVERS INSTALLED ON FOURTH STREET SHALL BE BELLGARD CATALINA GRANA 3-PIECE STONE (12 x 6, 12 x 9, 12 x 12) LARGE UNIT PATTERN B IN THE COLOR VICTORIAN.

REVISION	APPROVED	DATE	CITY OF KETCHUM STANDARD DRAWING	DRAWING NO.
REV 3	CITY	3/8/2021		
			PAVER SIDEWALK	17



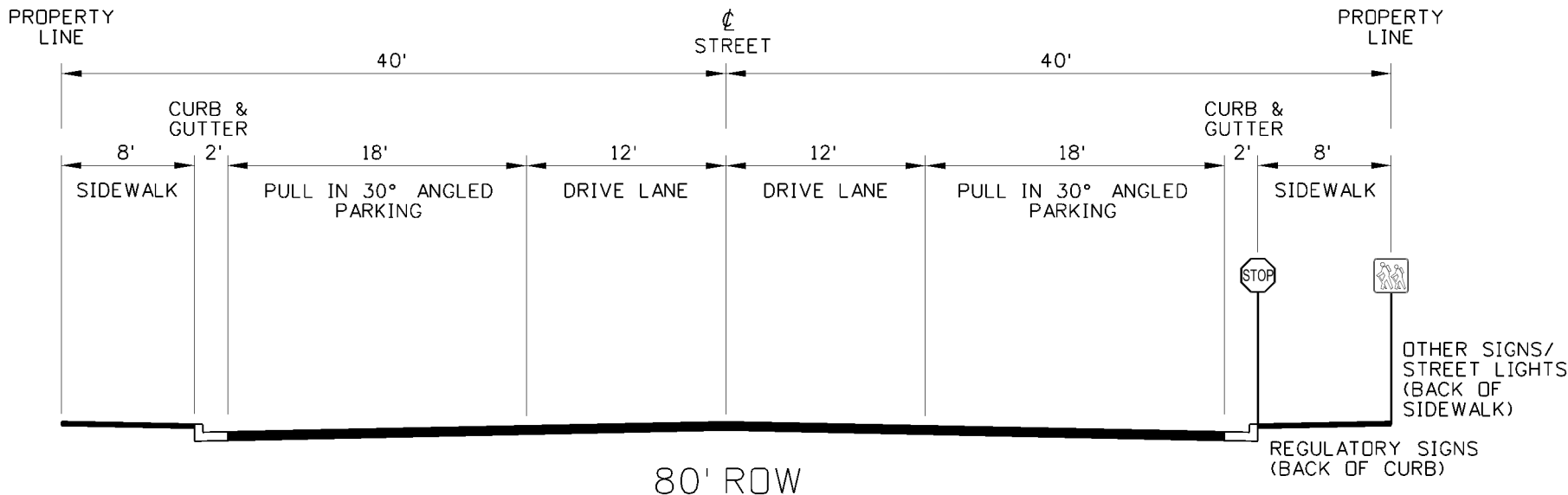
NOTES:

- ① THE SCHEMATIC ABOVE SHOWS A CROSS SECTION OF AN 60-FOOT WIDE RIGHT-OF-WAY (ROW).
- ② SIDEWALKS IN 60-FOOT ROW ARE 8 FT WIDE. A MINIMUM OF 6 FT IS REQUIRED AROUND ALL OBSTACLES TO PROVIDE A CLEAR PATH FOR PEDESTRIANS.
- ③ EXAMPLES OF 60-FOOT ROW ROADS ARE FIRST THROUGH TENTH STREETS.
- ④ STOP AND STREET SIGNS ARE TO BE INSTALLED AT BACK OF CURB
- ⑤ PARKING SIGNS ARE TO BE INSTALLED AT BACK OF SIDEWALK
- ⑥ STREET LIGHTS ARE TO BE INSTALLED AT BACK OF SIDEWALK
- ⑦ PARKING STALLS ARE 8 FT WIDE BY 20 FT LONG PARALLEL STALLS

REVISIONS			
NO.	DATE	BY	DESCRIPTION
1	09/01/2019	SN	ROW DRAWINGS

CITY OF KETCHUM
**60' ROW
 LOCAL**

STANDARD DRAWING
 NO.
18



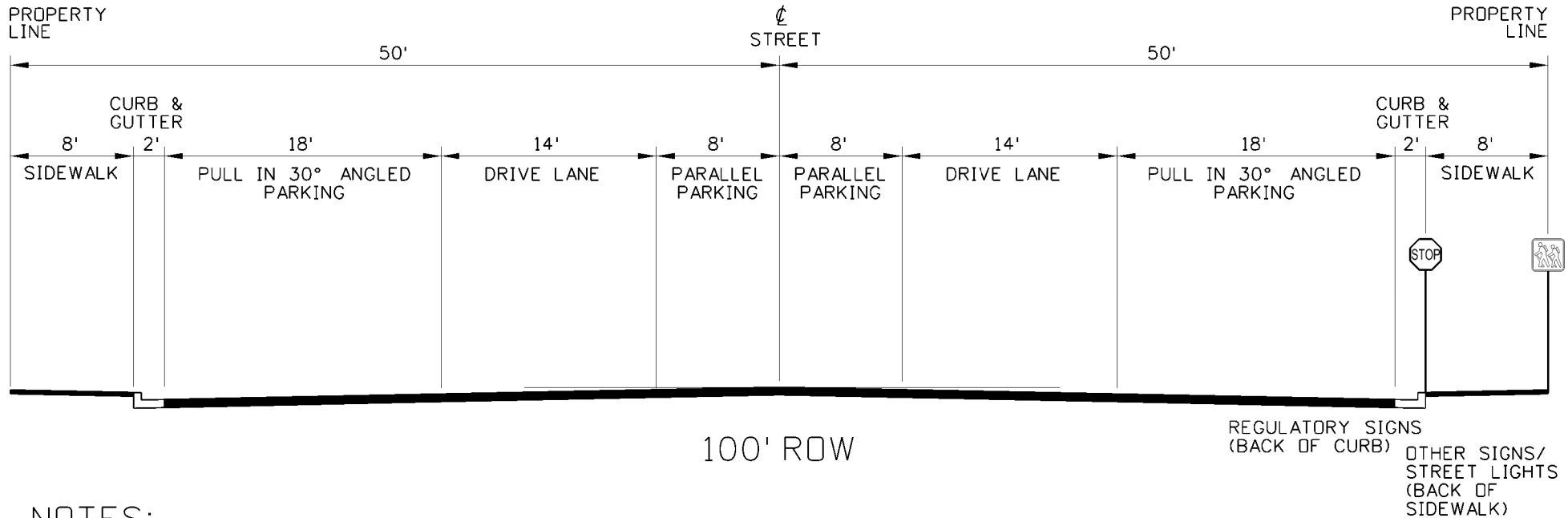
NOTES:

- ① THE SCHEMATIC ABOVE SHOWS A CROSS SECTION OF AN 80-FOOT WIDE RIGHT-OF-WAY (ROW).
- ② SIDEWALKS IN 80-FOOT ROW ARE 8 FT WIDE. A MINIMUM OF 6 FT IS REQUIRED AROUND ALL OBSTACLES TO PROVIDE A CLEAR PATH FOR PEDESTRIANS.
- ③ EXAMPLES OF 80-FOOT ROW ROADS ARE WALNUT AVENUE, RIVER ST, 2ND AVENUE AND 3RD AVENUE.
- ④ STOP AND STREET SIGNS ARE TO BE INSTALLED AT BACK OF CURB
- ⑤ PARKING SIGNS ARE TO BE INSTALLED AT BACK OF SIDEWALK
- ⑥ STREET LIGHTS ARE TO BE INSTALLED AT BACK OF SIDEWALK
- ⑦ PARKING STALLS ARE 9 FT WIDE BY 18 FT LONG 30° ANGLED PARKING MEASURED PERPENDICULAR TO CURB

REVISIONS			
NO.	DATE	BY	DESCRIPTION
1	09/01/2019	SN	ROW DRAWINGS

CITY OF KETCHUM
80' ROW
 COLLECTOR

STANDARD DRAWING
 NO.
19



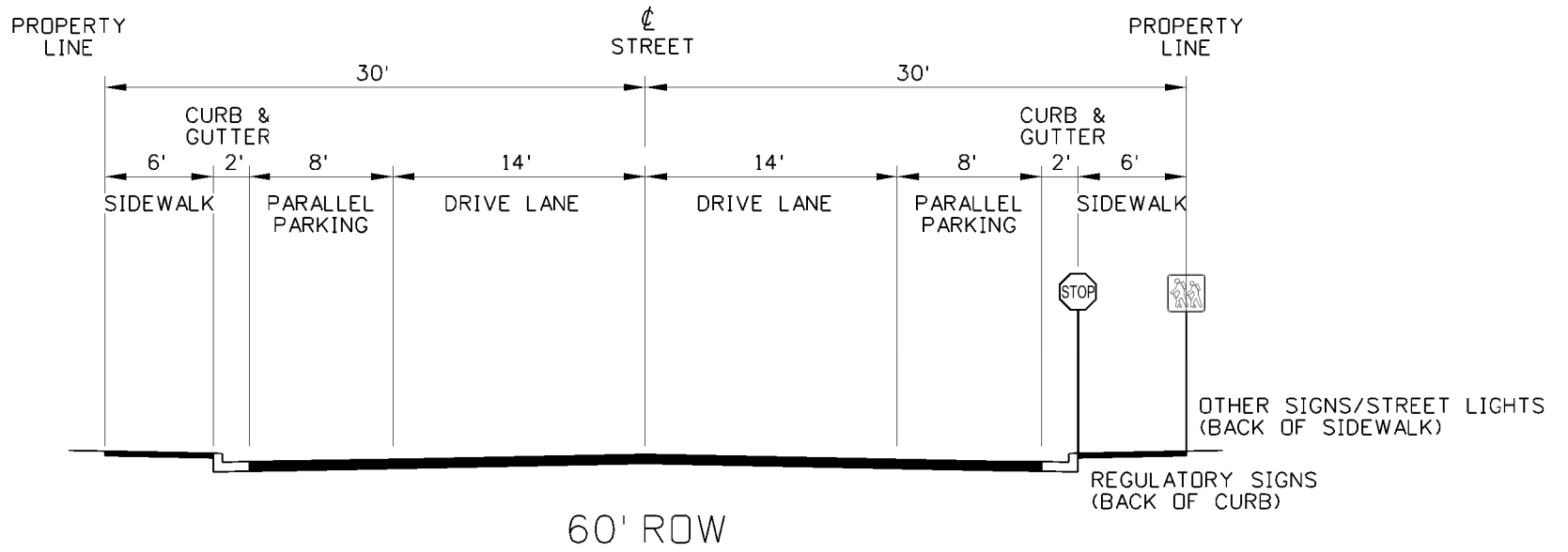
NOTES:

- ① THE SCHEMATIC ABOVE SHOWS A CROSS SECTION OF AN 100-FOOT WIDE RIGHT-OF-WAY (ROW).
- ② SIDEWALKS IN 100-FOOT ROW ARE 8 FT WIDE. A MINIMUM OF 6 FT IS REQUIRED AROUND ALL OBSTACLES TO PROVIDE A CLEAR PATH FOR PEDESTRIANS.
- ③ EXAMPLES OF 100-FOOT ROW ROADS ARE EAST AVENUE AND 1ST AVENUE.
- ④ STOP AND STREET SIGNS ARE TO BE INSTALLED AT BACK OF CURB
- ⑤ PARKING SIGNS ARE TO BE INSTALLED AT BACK OF SIDEWALK
- ⑥ STREET LIGHTS ARE TO BE INSTALLED AT BACK OF SIDEWALK
- ⑦ PARKING STALLS ARE 9 FT WIDE BY 18 FT LONG 30° ANGLED PARKING MEASURED PERPENDICULAR TO CURB. CENTER ROW PARKING STALLS ARE 8 FT WIDE BY 20 FT LONG PARALLEL STALLS.

REVISIONS			
NO.	DATE	BY	DESCRIPTION
1	09/01/2019	SN	ROW DRAWINGS

CITY OF KETCHUM
 100' ROW
 ARTERIAL

STANDARD DRAWING
 NO.
20



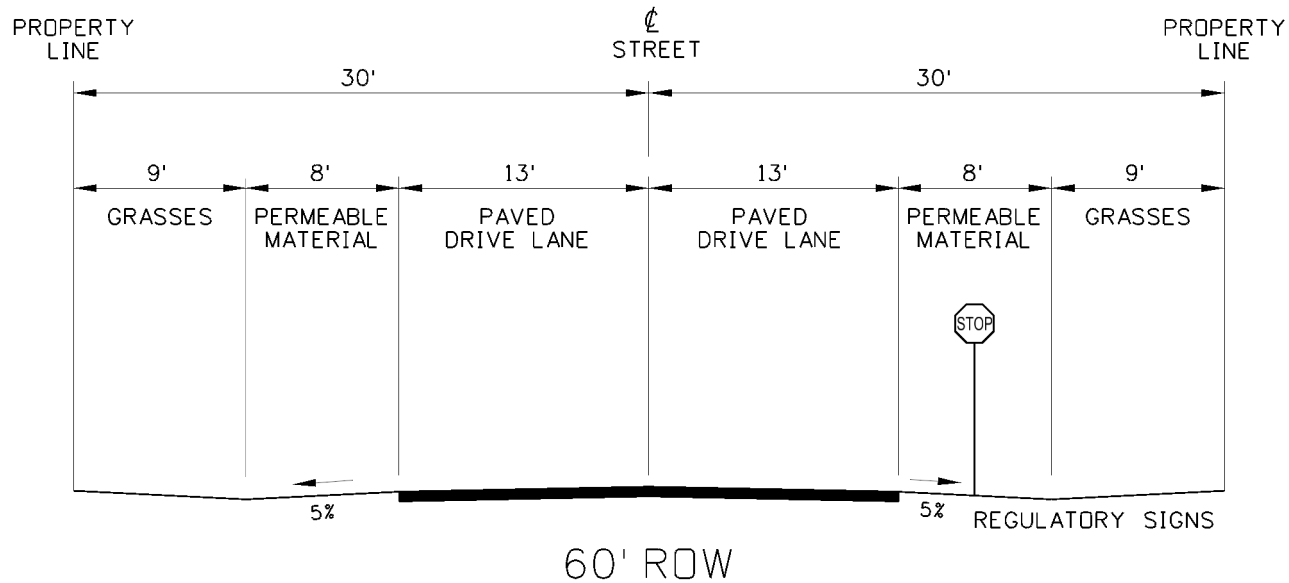
NOTES:

- ① THE SCHEMATIC ABOVE SHOWS A CROSS SECTION OF AN 60-FOOT WIDE RIGHT-OF-WAY (ROW) IN THE LIGHT INDUSTRIAL (LI) DISTRICTS.
- ② SIDEWALKS IN 60-FOOT ROW ARE 6 FT WIDE.
- ③ EXAMPLES OF 60-FOOT ROW ROADS IN THE LIGHT INDUSTRIAL (LI) DISTRICTS ARE LEWIS STREET AND NORTHWOOD WAY.
- ④ STOP AND STREET SIGNS ARE TO BE INSTALLED AT BACK OF CURB
- ⑤ PARKING SIGNS ARE TO BE INSTALLED AT BACK OF SIDEWALK
- ⑥ STREET LIGHTS ARE TO BE INSTALLED AT BACK OF SIDEWALK
- ⑦ PARKING STALLS ARE 8 FT WIDE BY 20 FT LONG PARALLEL STALLS

REVISIONS			
NO.	DATE	BY	DESCRIPTION
1	09/01/2019	SN	ROW DRAWINGS

CITY OF KETCHUM
60' ROW
 LIGHT INDUSTRIAL (LI) COLLECTOR

STANDARD DRAWING
 NO. 21



NOTES:

- ① THE SCHEMATIC ABOVE SHOWS A CROSS SECTION OF AN 60-FOOT WIDE RIGHT-OF-WAY (ROW) FOR STREETS LOCATED IN RESIDENTIAL DISTRICTS.
- ② SHOULDERS ARE REQUIRED TO ACCOMMODATE DRAINAGE, PARKING, SNOW STORAGE, AND ACCESS FOR EMERGENCY VEHICLES WITHIN LOCAL-RESIDENTIAL STREET ROWS AND PROVIDE MATERIALS THAT CAN REASONABLY BE MAINTAINED BY THE CITY.
- ③ EXAMPLES OF 60-FOOT ROW ROADS LOCATED IN RESIDENTIAL DISTRICTS ARE DOLLAR DRIVE, IRENE ST, BELMONT AND WANDERS WAY.
- ④ STOP AND STREET SIGNS ARE TO BE INSTALLED 2 FT FROM EDGE OF PAVEMENT
- ⑤ 8 FT PERMEABLE SHOULDER AT A 5% SLOPE FOR PARALLEL PARKING

REVISIONS			
NO.	DATE	BY	DESCRIPTION
1	09/01/2019	SN	ROW DRAWINGS

CITY OF KETCHUM
 60' ROW
 RESIDENTIAL

STANDARD DRAWING
 NO.

22