

ORDINANCE NUMBER 1100

AN ORDINANCE OF THE CITY OF KETCHUM, IDAHO, AMENDING TITLE 12, CHAPTER 12.20.020, STREETScape STANDARDS, BY ESTABLISHING MODIFIED STREET LIGHT STANDARDS FOR THE KETCHUM COMMUNITY CORE AND ESTABLISHING PRIORITIES FOR NEW AND REPLACEMENT STREET LIGHTS WITHIN SAID CORE, BY ADDING NEW LANGUAGE; CLARIFYING THE PURPOSE, APPLICABILITY AND EXCEPTIONS; PROVIDING A SAVINGS AND SEVERABILITY CLAUSE, PROVIDING A REPEALER CLAUSE AND PROVIDING FOR AN EFFECTIVE DATE.

WHEREAS, the City of Ketchum per Ordinances 697 and 751 adopted Ketchum Streetscape Standards in 1999, which were used by the City and private developers throughout Ketchum; and,

WHEREAS, the 2001 Ketchum Comprehensive Plan and the 2006 Downtown Mater Plan both promote a more walkable downtown Ketchum with safe streets lit appropriately for pedestrian use; and,

WHEREAS, an inventory of the different street light standards within the downtown core has been created and is outlined below and shown on Exhibit A; and,

WHEREAS, it is beneficial for the City to establish standards and guidelines for the management of the existing inventory, and for implementation of new street lights; and,

WHEREAS, the City desires to only use standards that comply with the Ketchum Dark Sky Ordinance, and to move towards sustainable street lights that consume less energy; and

WHEREAS, the Ketchum Community Development Corporation, through their Town Design Team and Walkability projects have provided expertise to the City on the following standards and guidelines, and;

WHEREAS, those portions of Title 12 Chapter 12.20.020 related to Street Lights are hereby amended and replaced with the guidelines herein.

NOW, THEREFORE, BE IT ORDAINED BY THE MAYOR AND THE CITY COUNCIL OF THE CITY OF KETCHUM, IDAHO:

SECTION 1: CHAPTER 12.20.020 is hereby amended by adding the underlined language below:

1.1: Street Light Type Inventory (Example of each Fixture listed below, Exhibit B)

Fixture A: 20' tall green 1999 Ketchum Streetscape Standards Light (approx 40 in Community Core)

Fixture B: 12' tall green 1999 Ketchum Streetscape Standards Light (approx 14 in Community Core)

Fixture C: Old cobra head street lights provided by Idaho Power on power poles (quantity unknown)

Fixture D: Miscellaneous other street standards such as 4th Street Heritage Corridor Standard

Fixture E: Town Square Solar Standard

1.2: Guidelines

2.1 The City's adopted goal in the Community Core is a minimum of two (2) fixtures per street intersection, with distribution of fixture types as follows:

2.2 Fixture A locations: Fixture A to remain on Sun Valley Road.

2.3 Fixture B locations: Fixture B to be phased out wherever possible at intersections as the 12' height casts light too low for safe pedestrian travel. Figure B may remain mid-block and other locations not vehicular intersections.

2.4 Fixture C locations: Fixture C to be phased out wherever possible.

2.5 Fixture D locations: Fixture D to remain on the Fourth Street Heritage Corridor, including future phases of the corridor.

2.5 Fixture E locations: Fixture E to be used at all locations other than Sun Valley Road and Fourth Street Heritage corridor.

1.3: Lumen Strength

Fixtures A and B shall be converted over time to a lumen strength of 100 watts or less. Major intersections should be converted over time to a lumen strength of 200 watts or less.

SECTION 2. SAVINGS AND SEVERABILITY CLAUSE. It is hereby declared to be the legislative intent that the provisions and parts of this Ordinance shall be severable. If any paragraph, part, section, subsection, sentence, clause or phrase of this Ordinance is for any reason held to be invalid for any reason by a court of competent jurisdiction, such decision shall not affect the validity of the remaining portions of this Ordinance.


SECTION 3. CODIFICATION CLAUSE. The City Clerk is instructed to immediately forward this Ordinance to the codifier of the official municipal code for proper revision of the code.

SECTION 4. REPEALER CLAUSE. All City of Ketchum code sections, ordinances or resolutions or parts thereof, which are in conflict herewith are hereby repealed.

SECTION 5. PUBLICATION. This Ordinance, or a summary thereof in compliance with Section 50-901A, Idaho Code, substantially in the form annexed hereto as Exhibit A, shall be published once in the official newspaper of the City, and shall take effect immediately upon its passage, approval and publication.

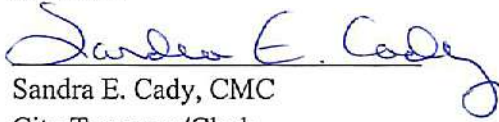
SECTION 6. EFFECTIVE DATE. This Ordinance shall be in full force and effect upon the date of its publication as provided by law which is November 14, 2012.

PASSED BY THE CITY COUNCIL OF THE CITY OF KETCHUM, IDAHO, and approved by the Mayor this 5th day of November, 2012.

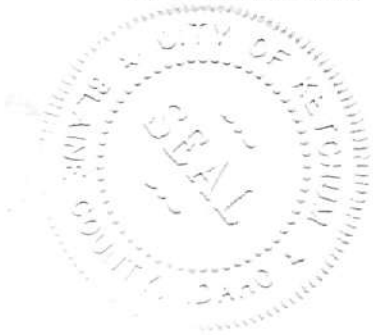
CITY OF KETCHUM, IDAHO


Randy Hall, Mayor

ATTEST:



Sandra E. Cady, CMC
City Treasurer/Clerk



Faint, illegible text at the top of the page, possibly a header or title.

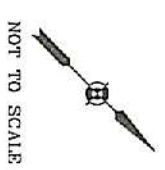
M. J. ...
Handwritten signature or initials in the upper left quadrant.



CITY OF KETCHUM STREETLIGHT EXHIBIT NOVEMBER 2012



- LEGEND**
- CITY CORE
 - ⑤ BLOCK NUMBER
 - PROPOSED PRIMARY STREETLIGHT LOCATION
 - PROPOSED SECONDARY STREETLIGHT LOCATION
 - EXISTING TYPE A STREETLIGHT
 - EXISTING TYPE B STREETLIGHT
 - EXISTING TYPE C STREETLIGHT
 - EXISTING TYPE D STREETLIGHT



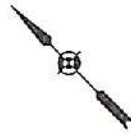
GALENA ENGINEERING, INC.
Civil Engineers & Land Surveyors
317 N River St
Halley, Idaho 83340
(208) 788-1705
(208) 788-4612 fax
email galena@galena-engineering.com

CITY OF KETCHUM
STREETLIGHT EXHIBIT
NOVEMBER 2012

LEGEND

- ⑬ CITY CORE
- ⑭ BLOCK NUMBER

- PROPOSED PRIMARY STREETLIGHT LOCATION
- PROPOSED SECONDARY STREETLIGHT LOCATION
- EXISTING TYPE A STREETLIGHT
- EXISTING TYPE B STREETLIGHT
- EXISTING TYPE C STREETLIGHT
- EXISTING TYPE D STREETLIGHT



NOT TO SCALE



GALENA ENGINEERING, INC.
Civil Engineers & Land Surveyors
317 N River St
Hailey, Idaho 83340
(208) 788-4612 fax
(208) 788-4612 fax
email galena@galena-engineering.com

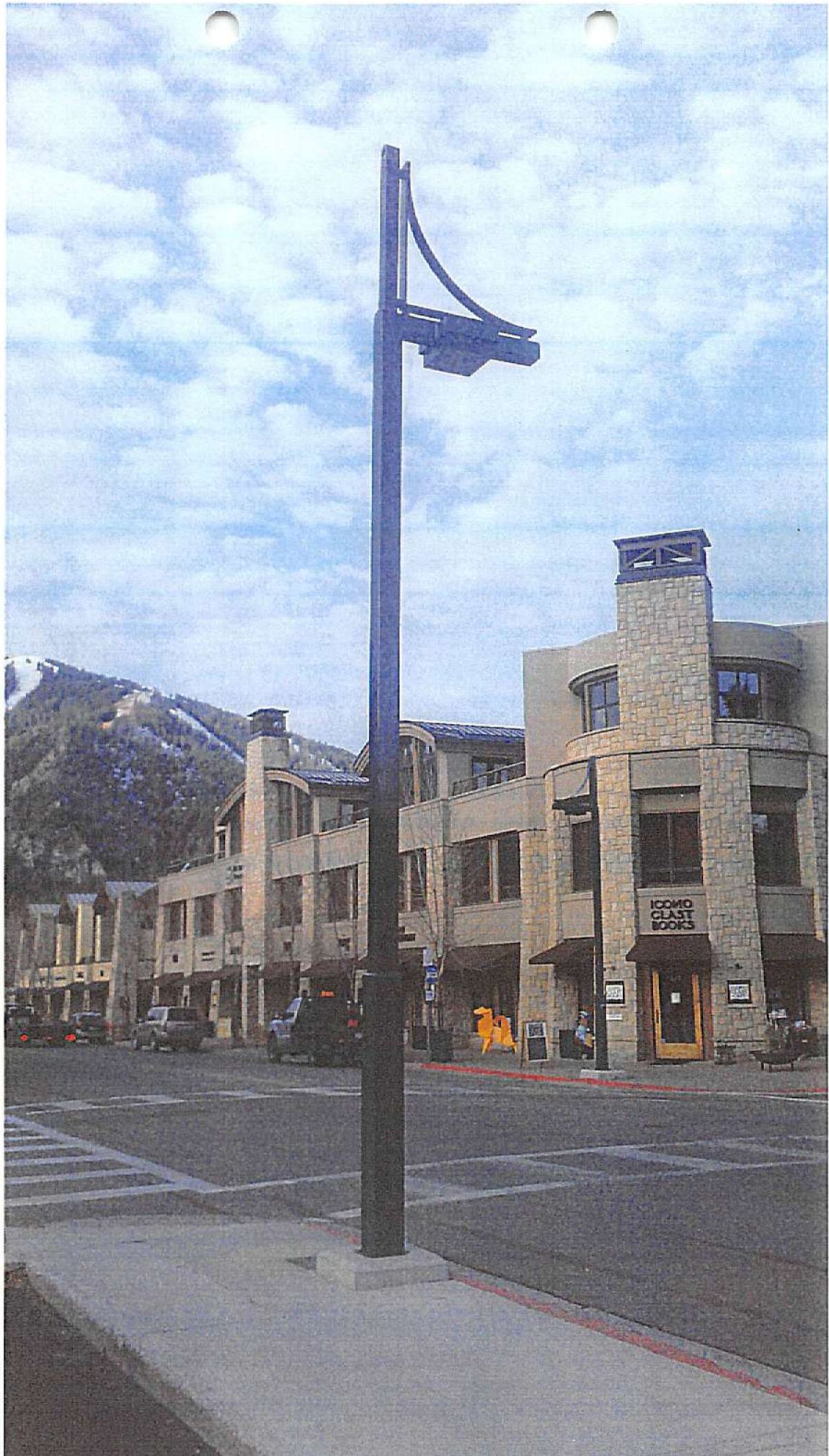
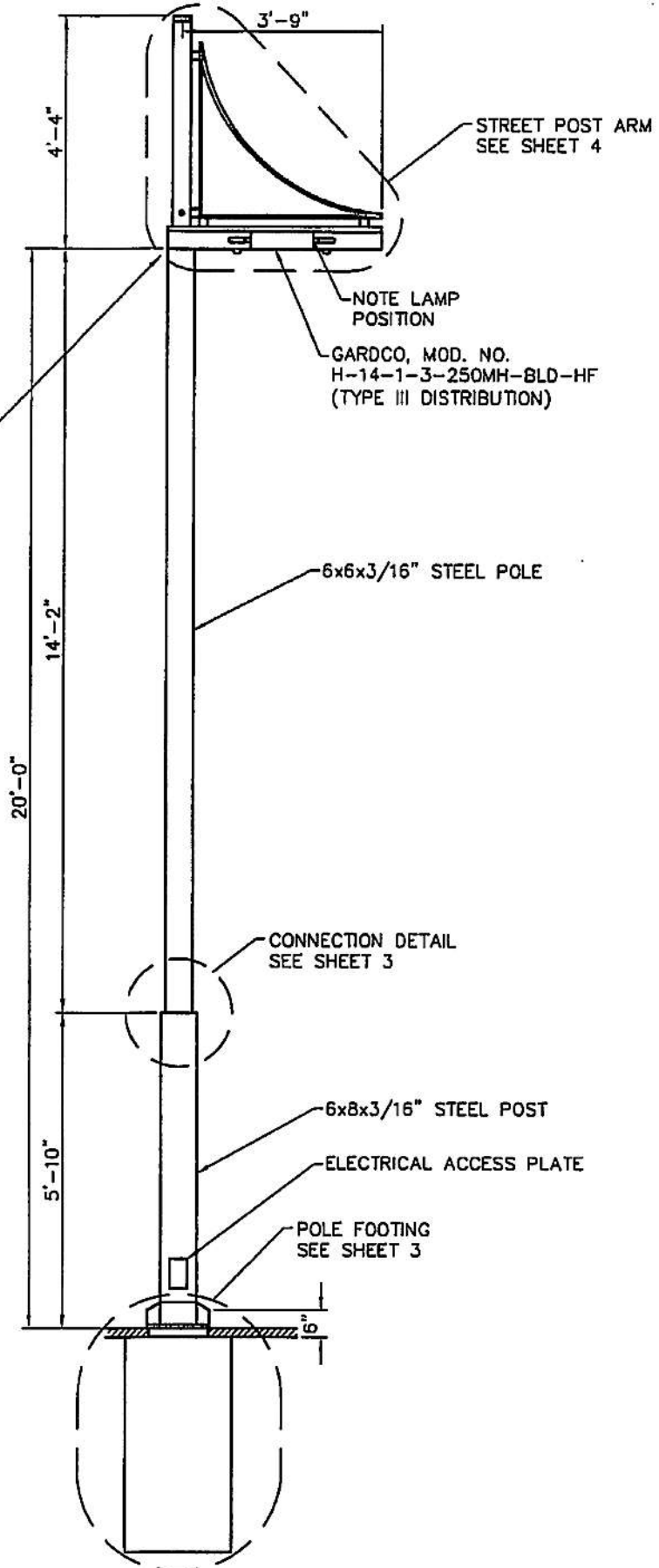


FIGURE 'A'

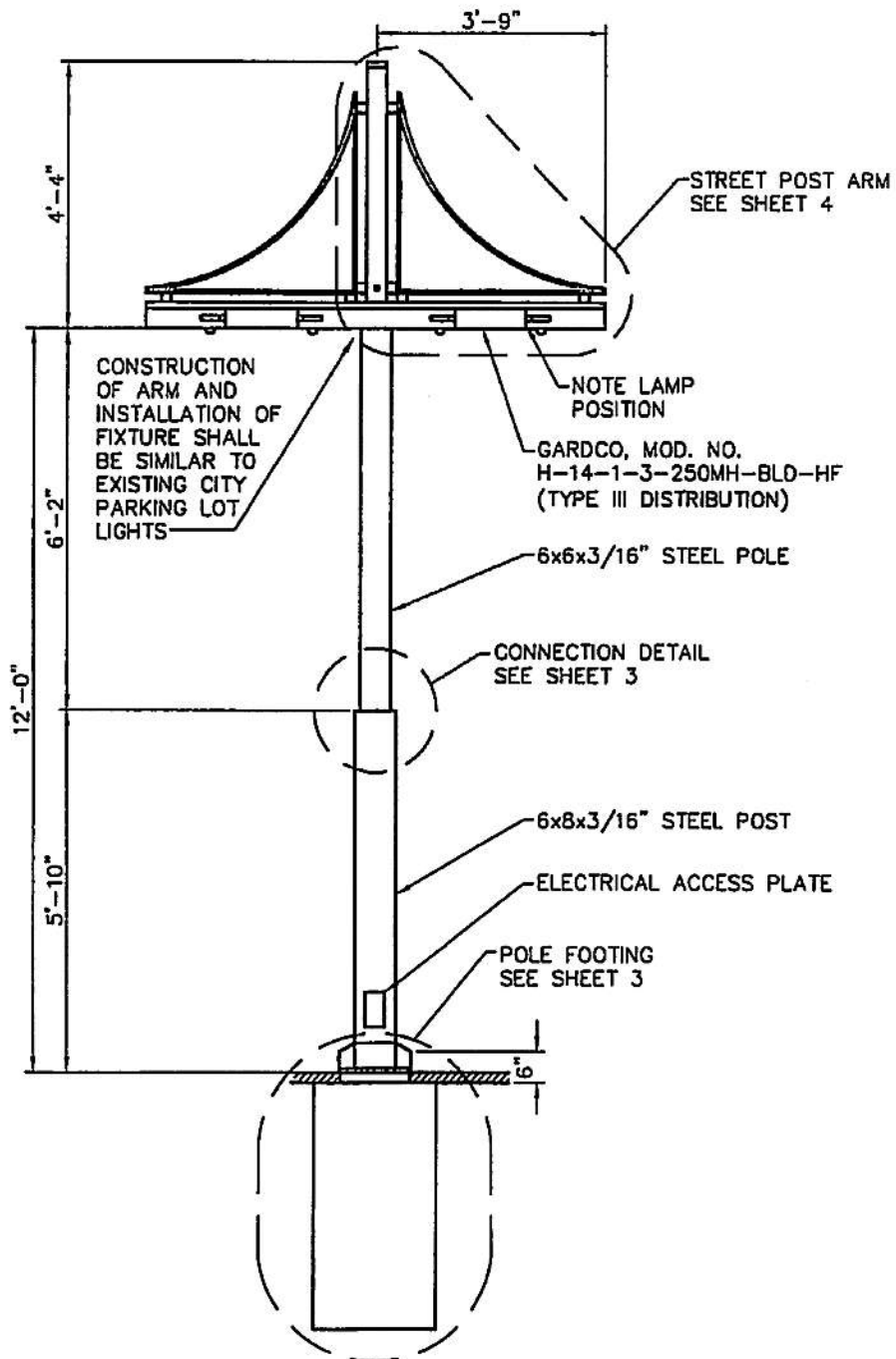
FIXTURE 'A'

CONSTRUCTION OF ARM AND
INSTALLATION OF FIXTURE
SHALL BE SIMILAR TO EXISTING
CITY PARKING LOT LIGHTS



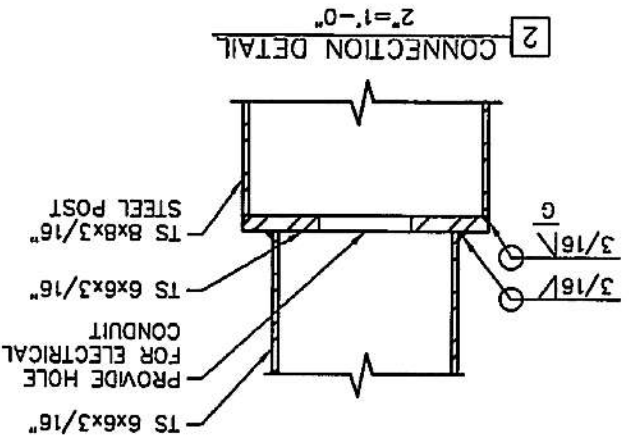
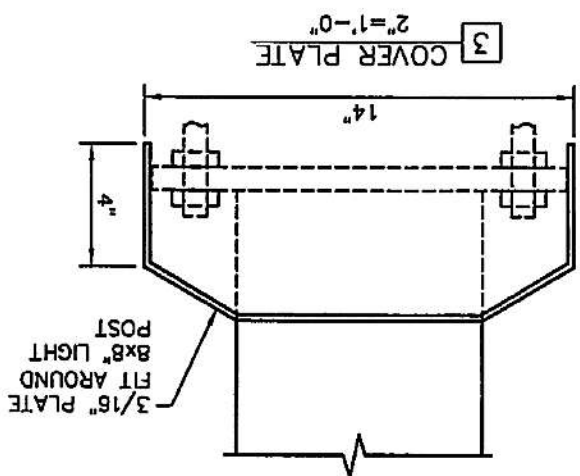
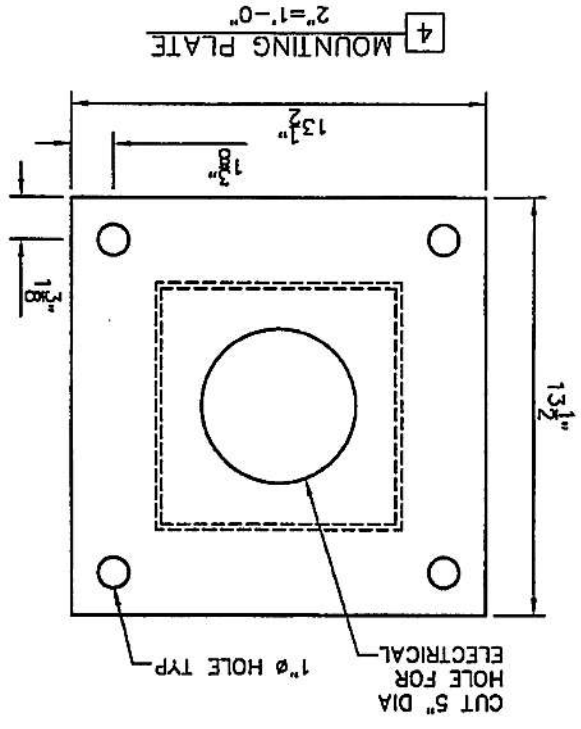
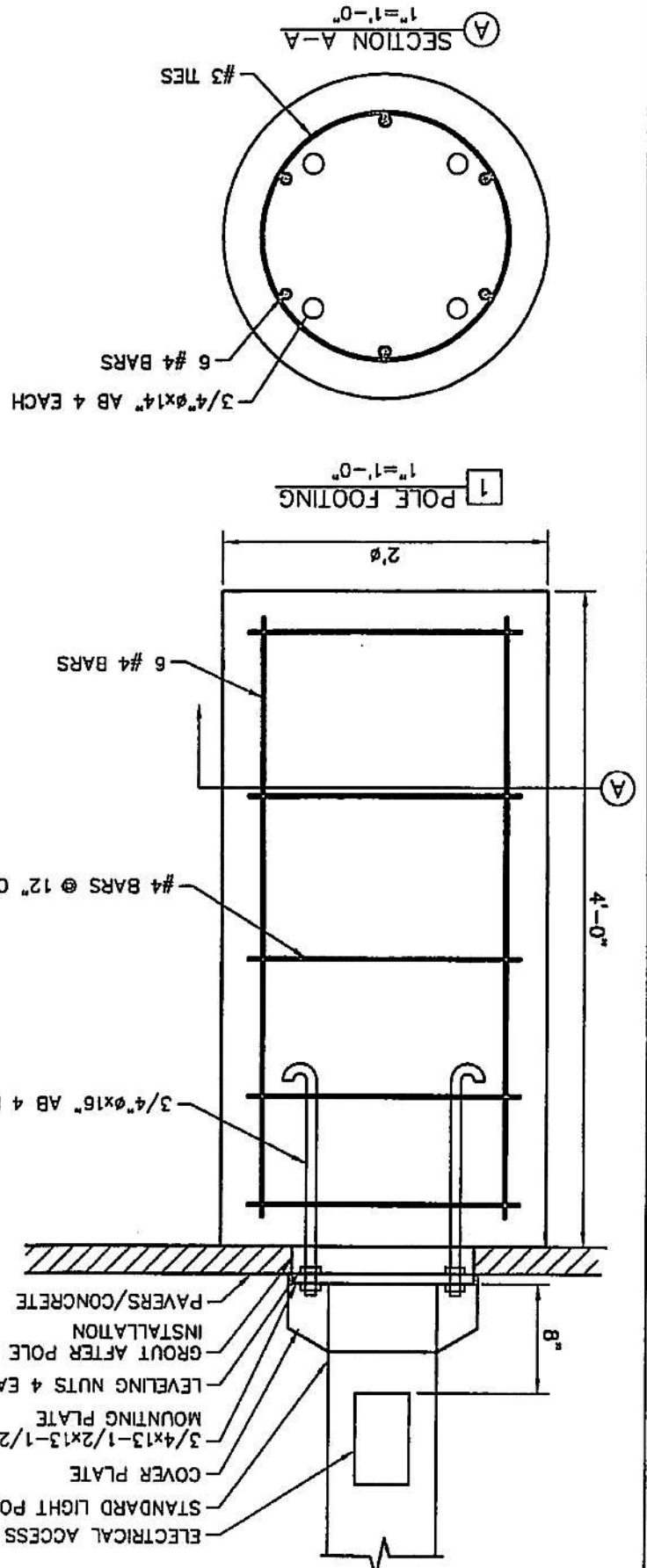
FIXTURE 'B'





STREET LIGHT BASE DETAILS

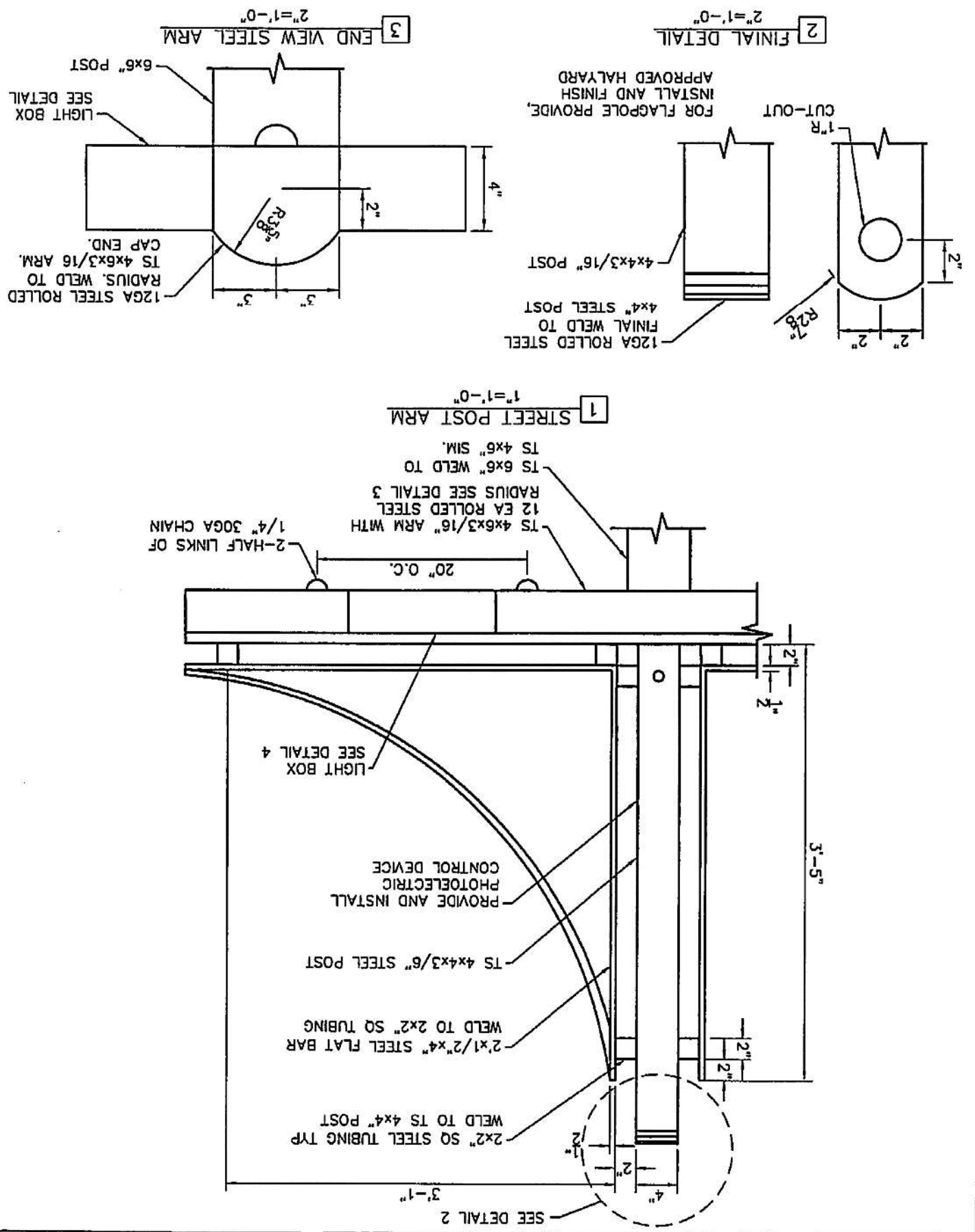
3 OF 5
 SCALE: AS NOTED



FLANGES IN AND IS

STREET LIGHT DETAILS

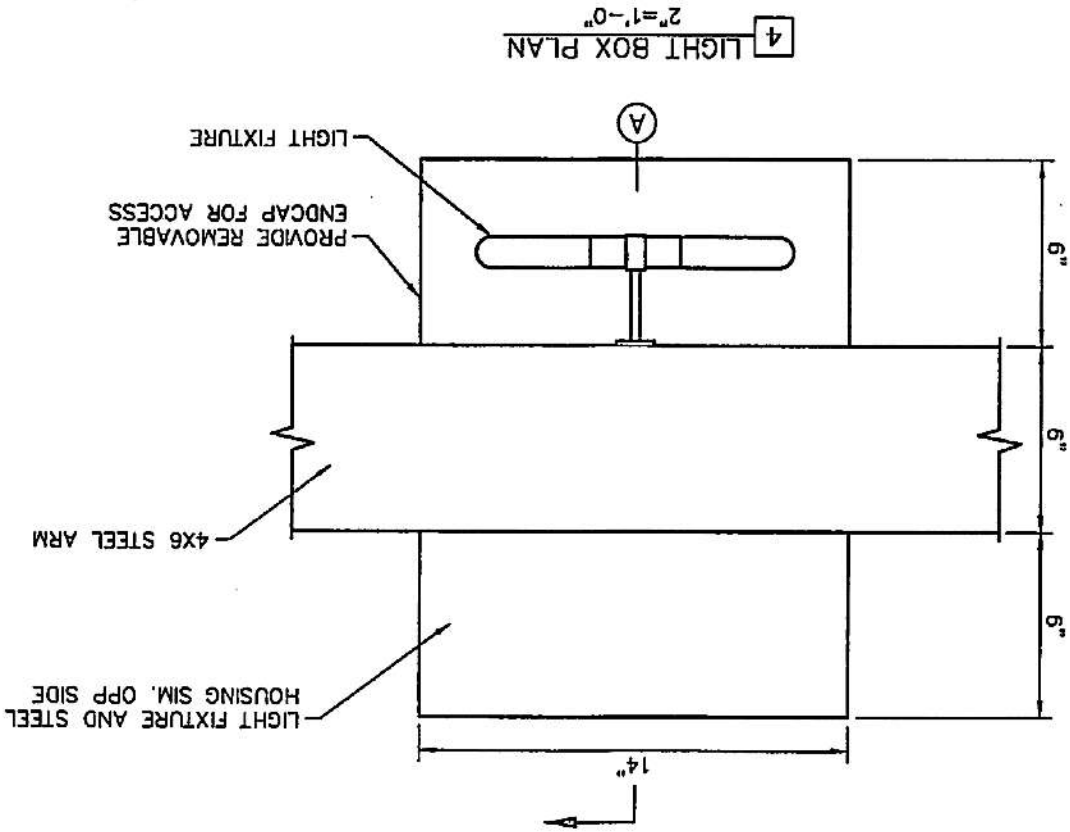
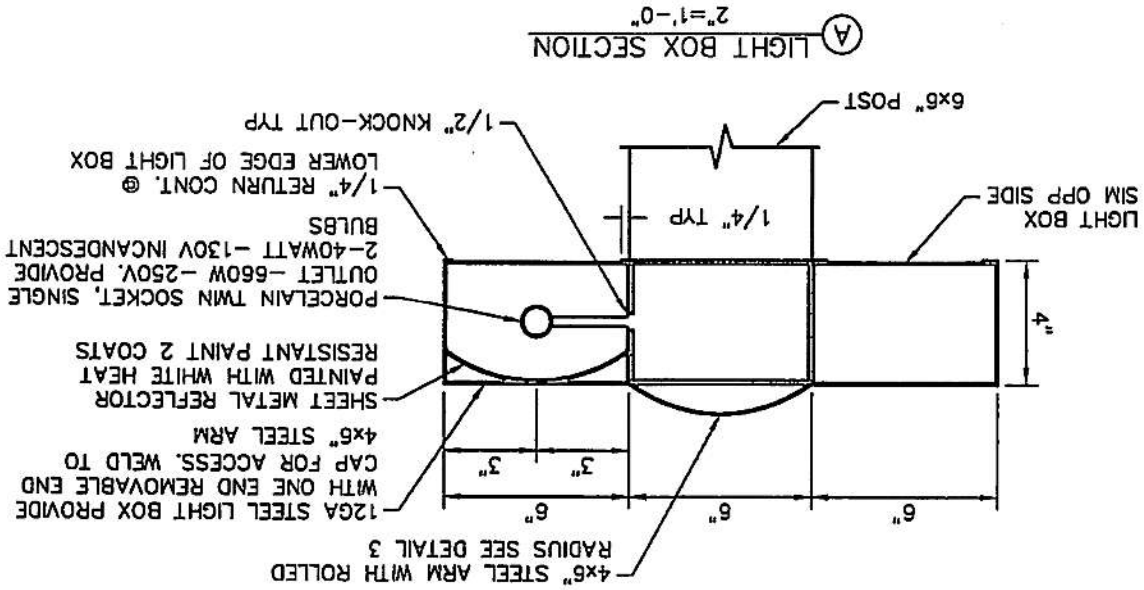
4 of 5
 SCALE: AS NOTED



A. AND B.

LIGHT BOX DETAILS

5 of 5
SCALE: AS NOTED



A AND B



FIGURE 1

FUTURE 'E'

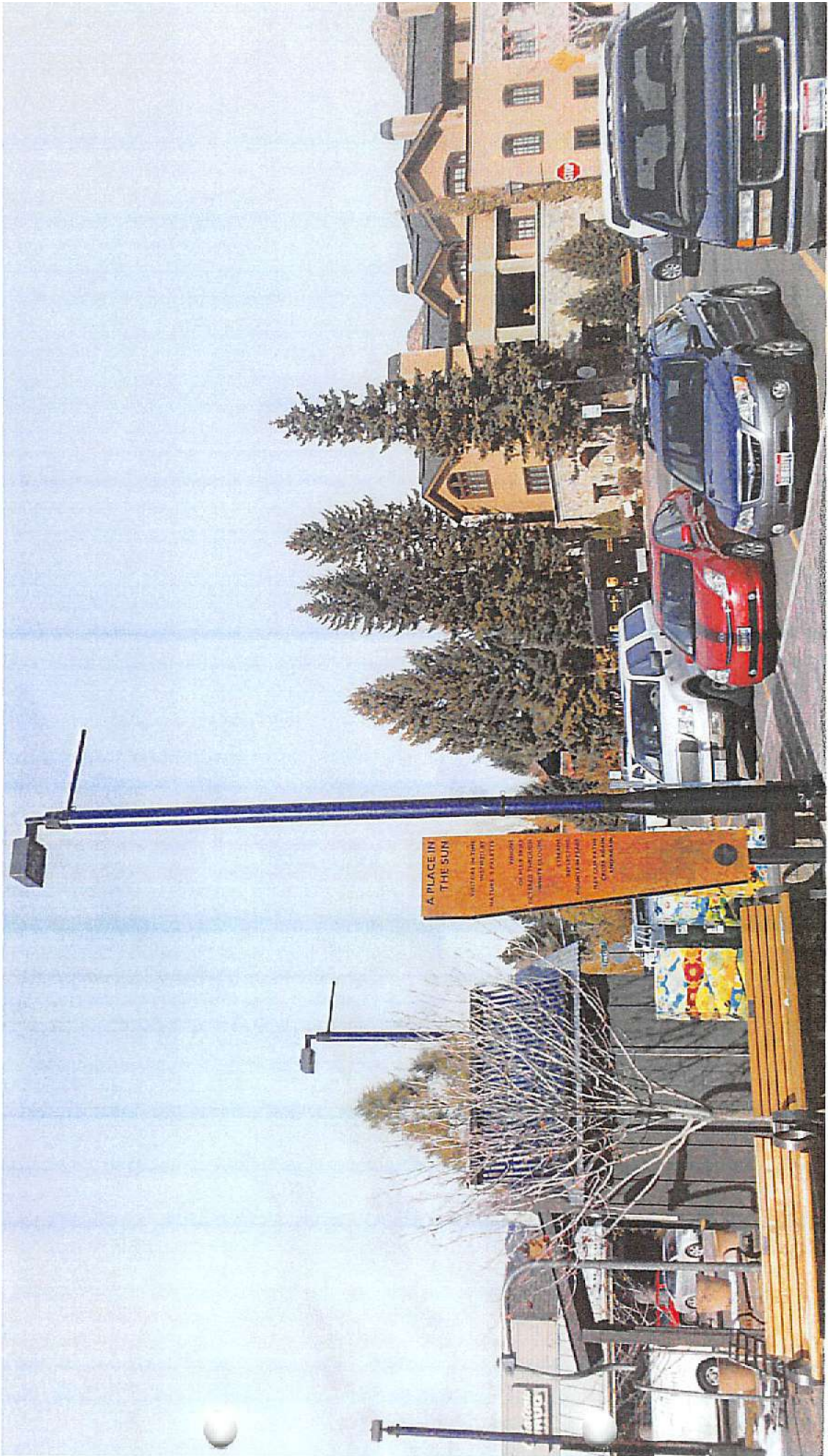


FIGURE 'D'

